

This map was prepared for
assessment purpose only

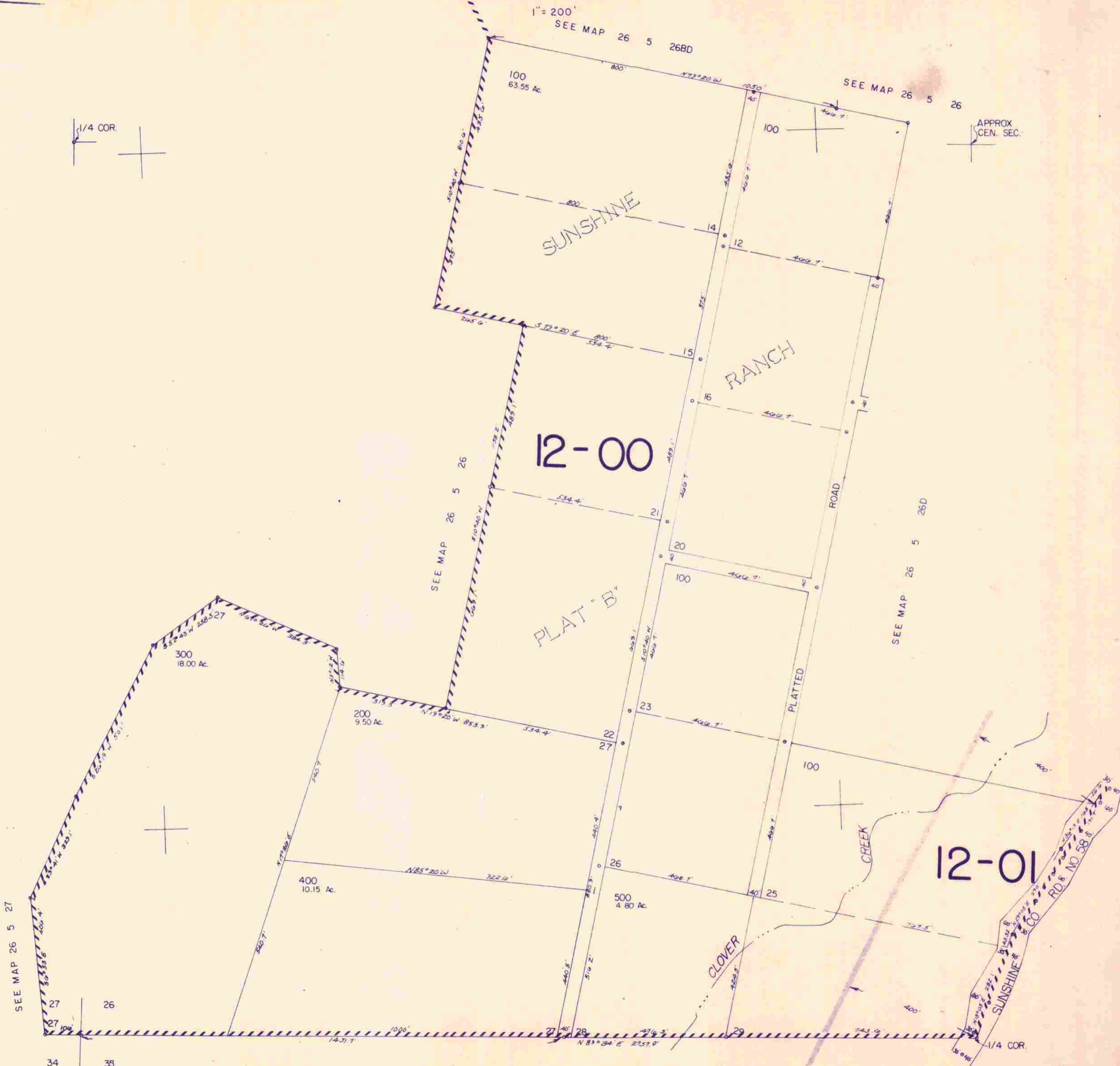
SW1/4 SEC. 26 T. 26S. R. 5 W. W.M.
DOUGLAS COUNTY

26 5 26C

1" = 200'
SEE MAP 26 5 26BD



600,000



SEE MAP 26 5 27

SEE MAP 26 5 26

SEE MAP 26 5 26D

34 36

SEE MAP 26 5 35

1,266,000

26 5 26C

10/18/28