

This map was prepared for assessment purpose only.

SE 1/4 NW 1/4 SEC. 26 T.26S. R. 5 W.W.M.
DOUGLAS COUNTY

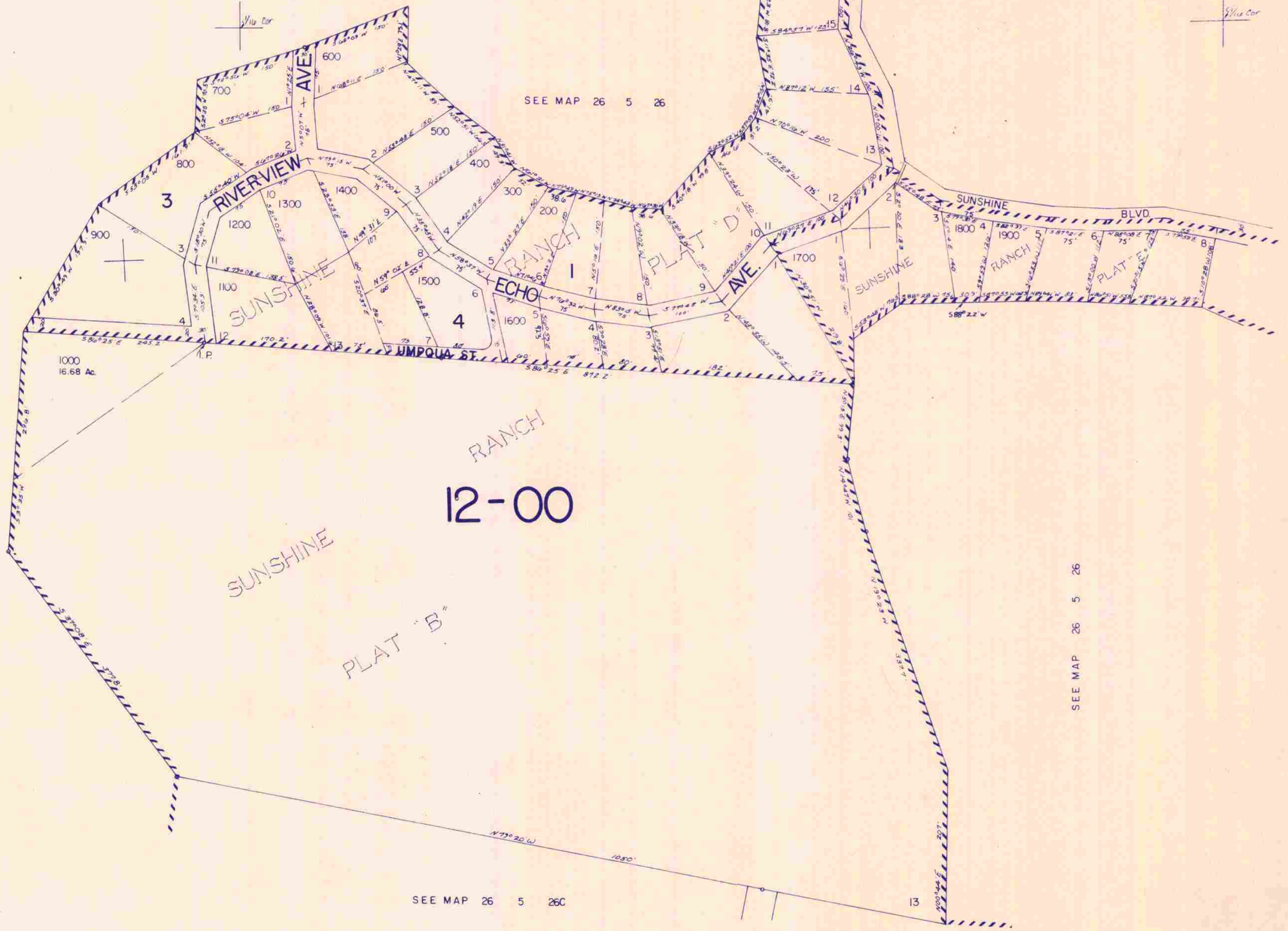
26 5 26BD

1" = 100'

12-01

RAINBOW AVE.

SEE MAP 26 5 26



SEE MAP 26 5 26

SUNSHINE RANCH
12-00

SEE MAP 26 5 26

SEE MAP 26 5 26C

SEE MAP 26 5 26AC

600,000

APPROX. CEN. SEC.

26 5 26BD

10/18/20