

This map was prepared for assessment purpose only.

SW1/4 NE1/4 SEC. 26 T.26S. R.5W. W.M.  
DOUGLAS COUNTY

26 5 26AC

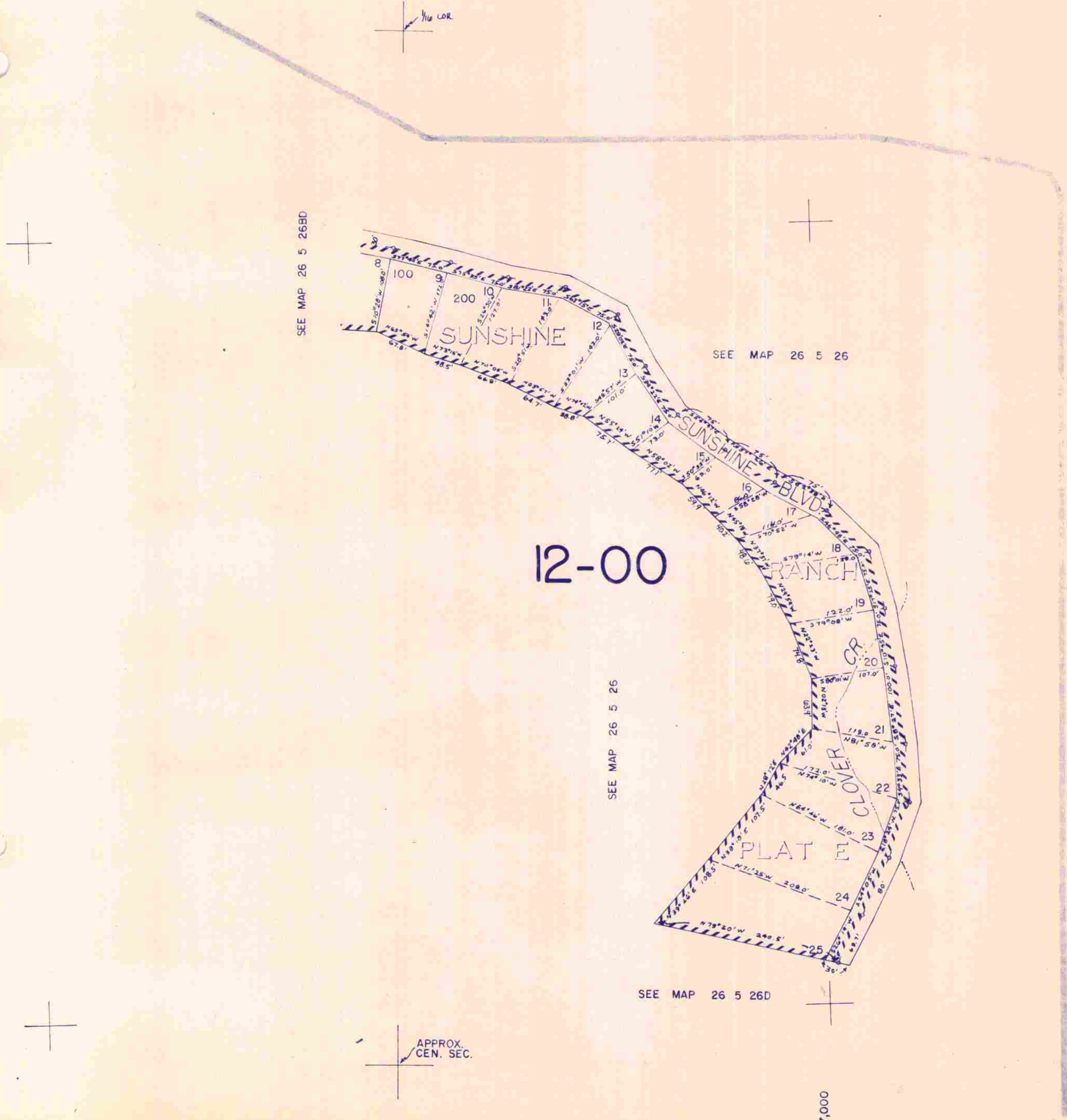
1" = 100'

SEE MAP 26 5 26BC

SEE MAP 26 5 26

SEE MAP 26 5 26

SEE MAP 26 5 26D



12-00

12-01

600,000

26 5 26AC

10/18/11