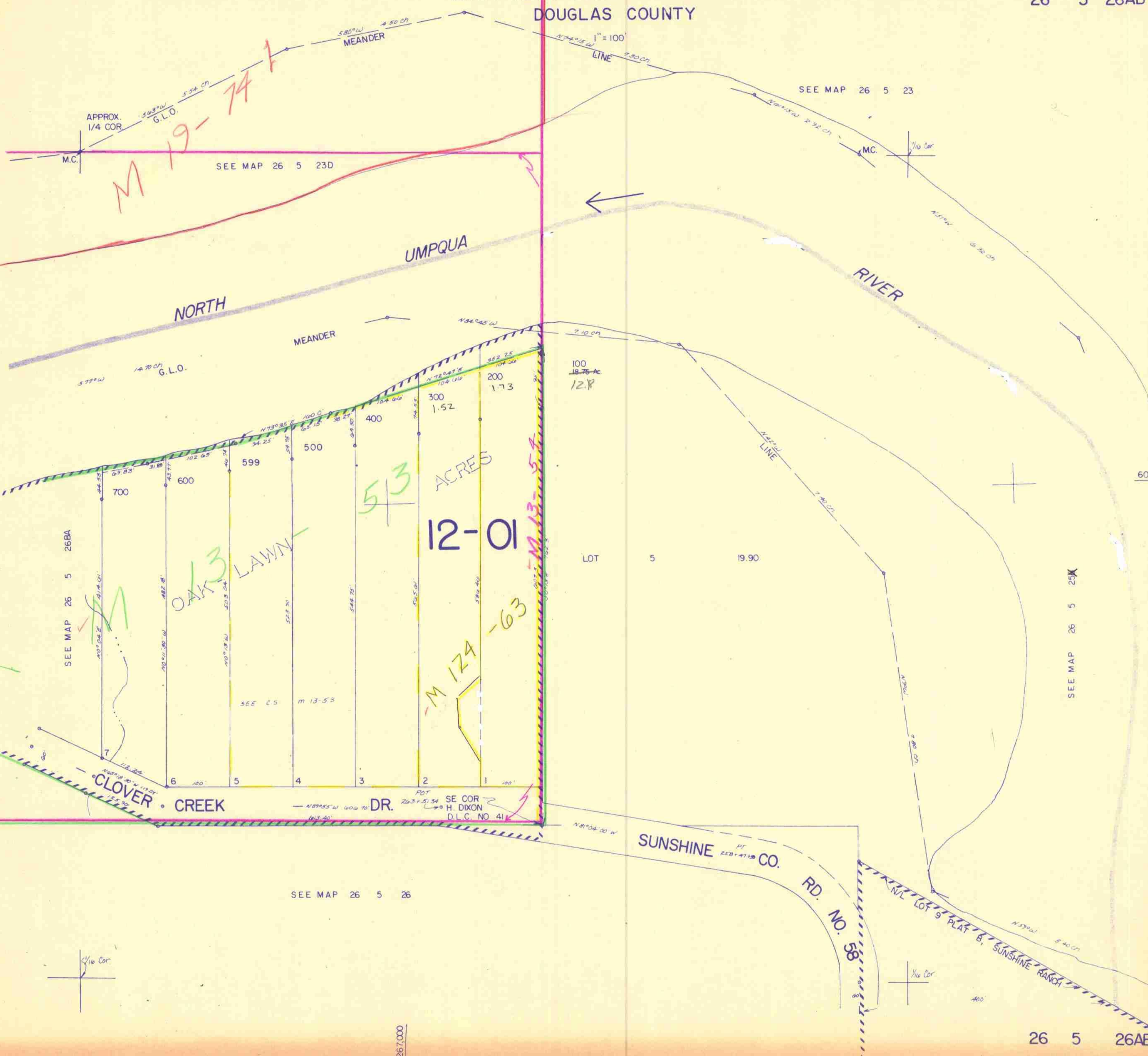


NW1/4 NE1/4 SEC. 26 T. 26S. R. 5W. W.M.  
DOUGLAS COUNTY

M 19-74



APPROX. 1/4 COR. G.L.O.

SEE MAP 26 5 23D

SEE MAP 26 5 23

NORTH

UMPQUA

RIVER

5.3 ACRES

12-01

OAK LAWN

SEE MAP 26 5 26BA

CLOVER CREEK DR.

SUNSHINE CO. RD. NO. 58

N/L LOT 9 PLAT B, SUNSHINE RANCH

SEE MAP 26 5 26

SEE MAP 26 5 25

1:267,000

LD 4138