

THIS MAP WAS PREPARED FOR ASSESSMENT PURPOSE ONLY.

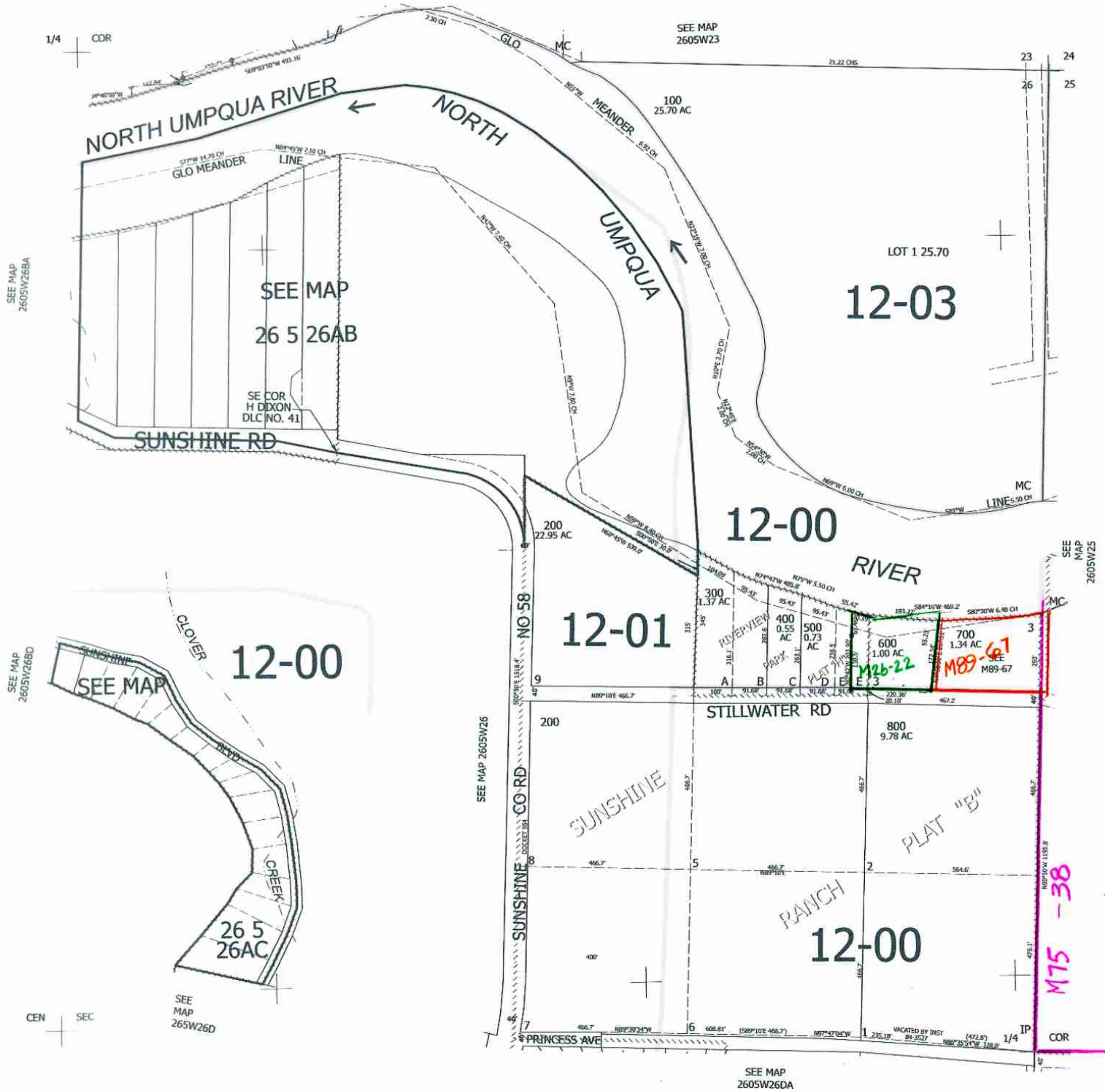
Upper Left:
123°15'33"W 43°17'16"N
418681.3E 602944N R

NE1/4 SEC.26 T.26S. R.05W. W.M.
DOUGLAS COUNTY
1" = 200'

Date Exported 2024-07-24

& INDEX

CANCELLED NOS:
701



8/20/24
JCN

260526A
& INDEX

Lower Right:
123°14'38"W 43°16'43"N
4190738E 599466N R