

THIS MAP WAS PREPARED FOR ASSESSMENT PURPOSE ONLY.

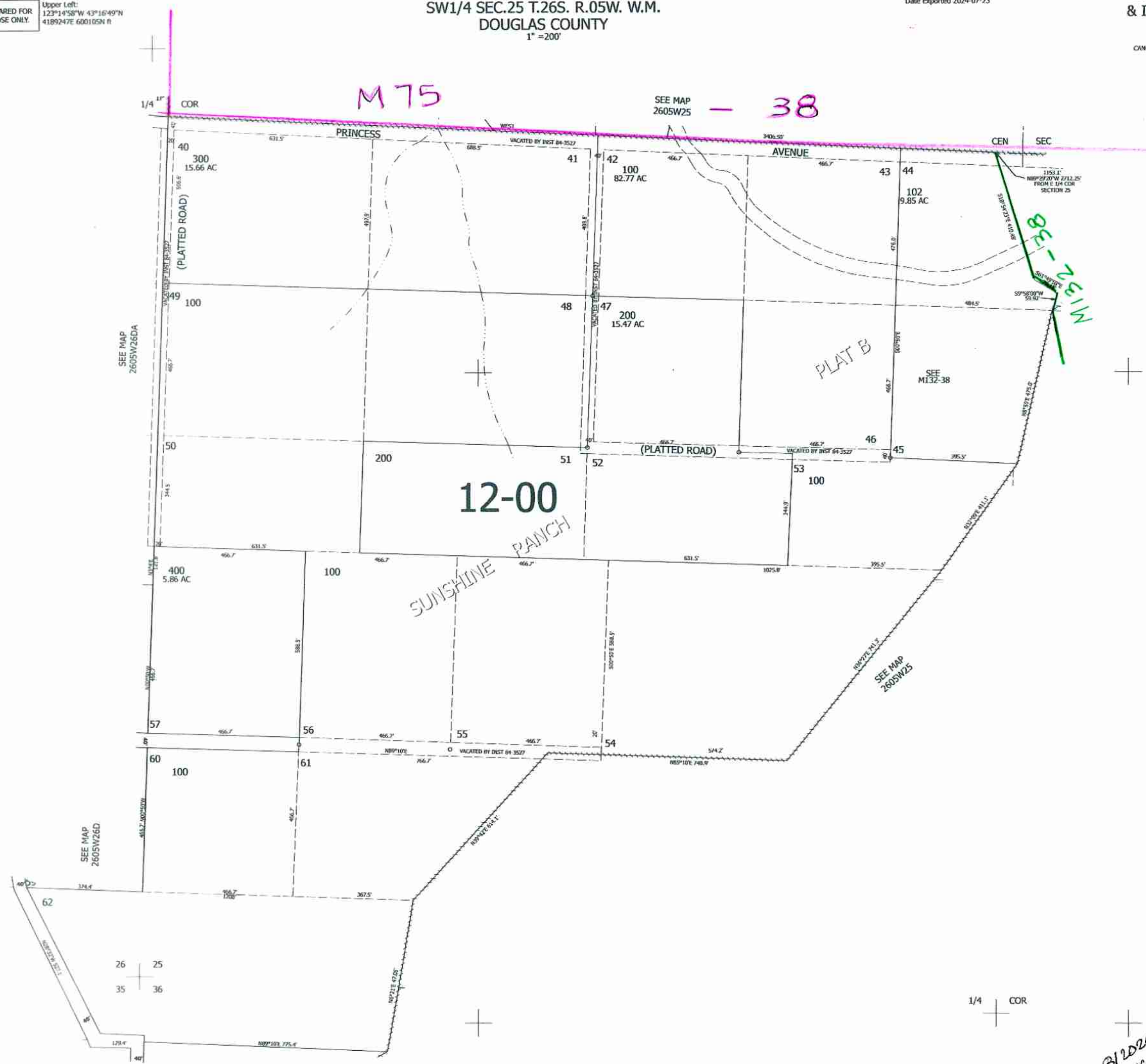
Upper Left:
123°14'58"W 43°16'49"N
4189247E 600105N R

SW1/4 SEC.25 T.26S. R.05W. W.M.
DOUGLAS COUNTY
1" = 200'

Date Exported 2024-07-23

200525C
& INDEX

CANCELLED NOS:
301 101



8/2024 B
JC

260525C
& INDEX

Lower Right: