

THIS MAP WAS PREPARED FOR ASSESSMENT PURPOSE ONLY.

Upper Left:
123°15'9"W 43°17'18"N
4188554E 603095N ft

SEC.25 T.26S. R.05W. W.M.
DOUGLAS COUNTY
1" = 400'

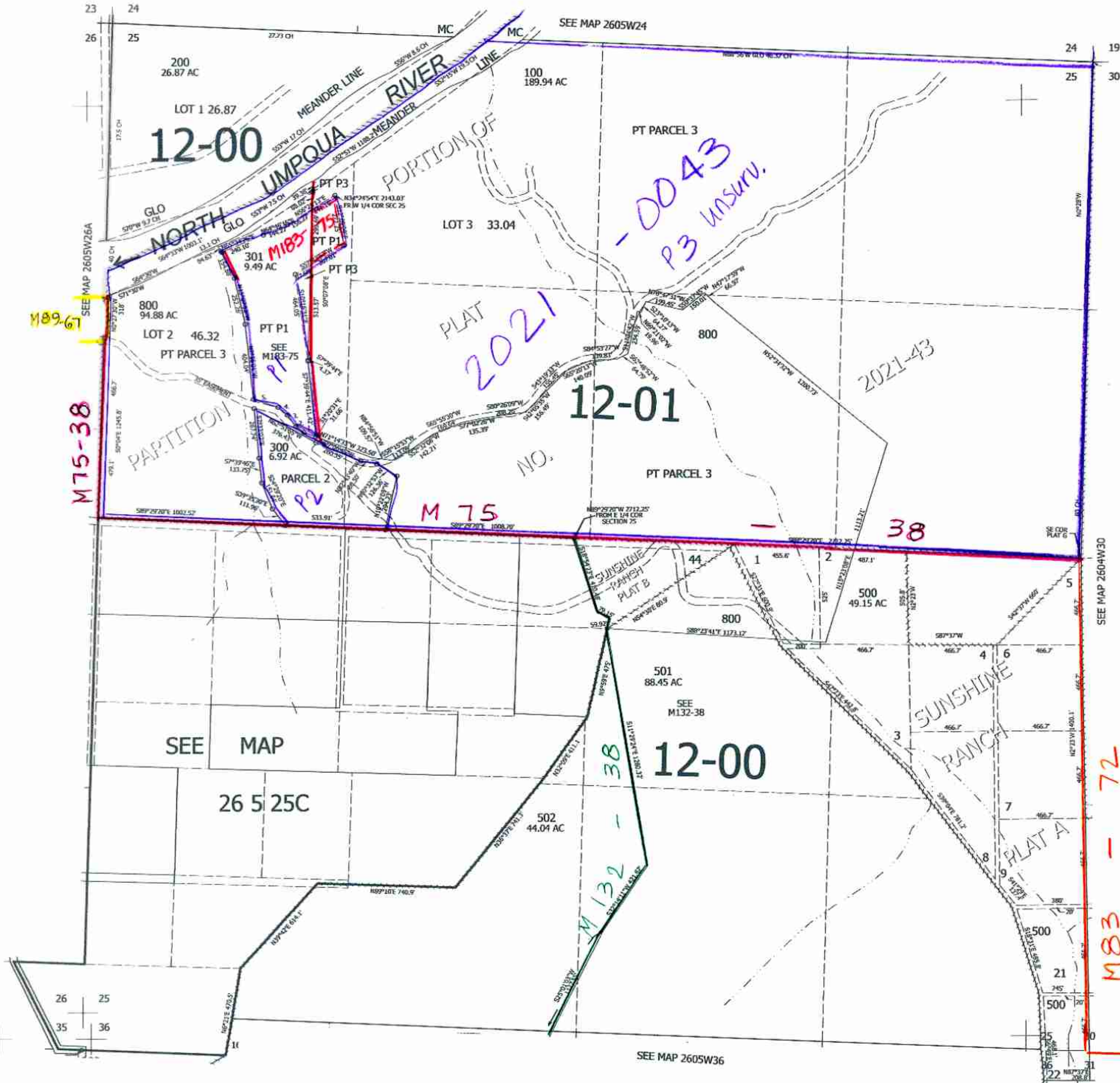
Date Exported 2024-07-24

260525
& INDEX

CANCELLED NOS:
600 & 700 400
101 102 302
401 103 303
104 503 504

PP 2021-43
PARCEL 1

1. N72°44'36"W 67.07'
2. N54°54'12"W 53.96'
3. N37°46'12"W 76.15'
4. N52°32'42"W 64.83'
5. N73°41'30"W 139.32'



6/2024
JC

260525
& INDEX

Lower Right:
123°13'20"W 43°16'12"N
4196403E 596140N ft