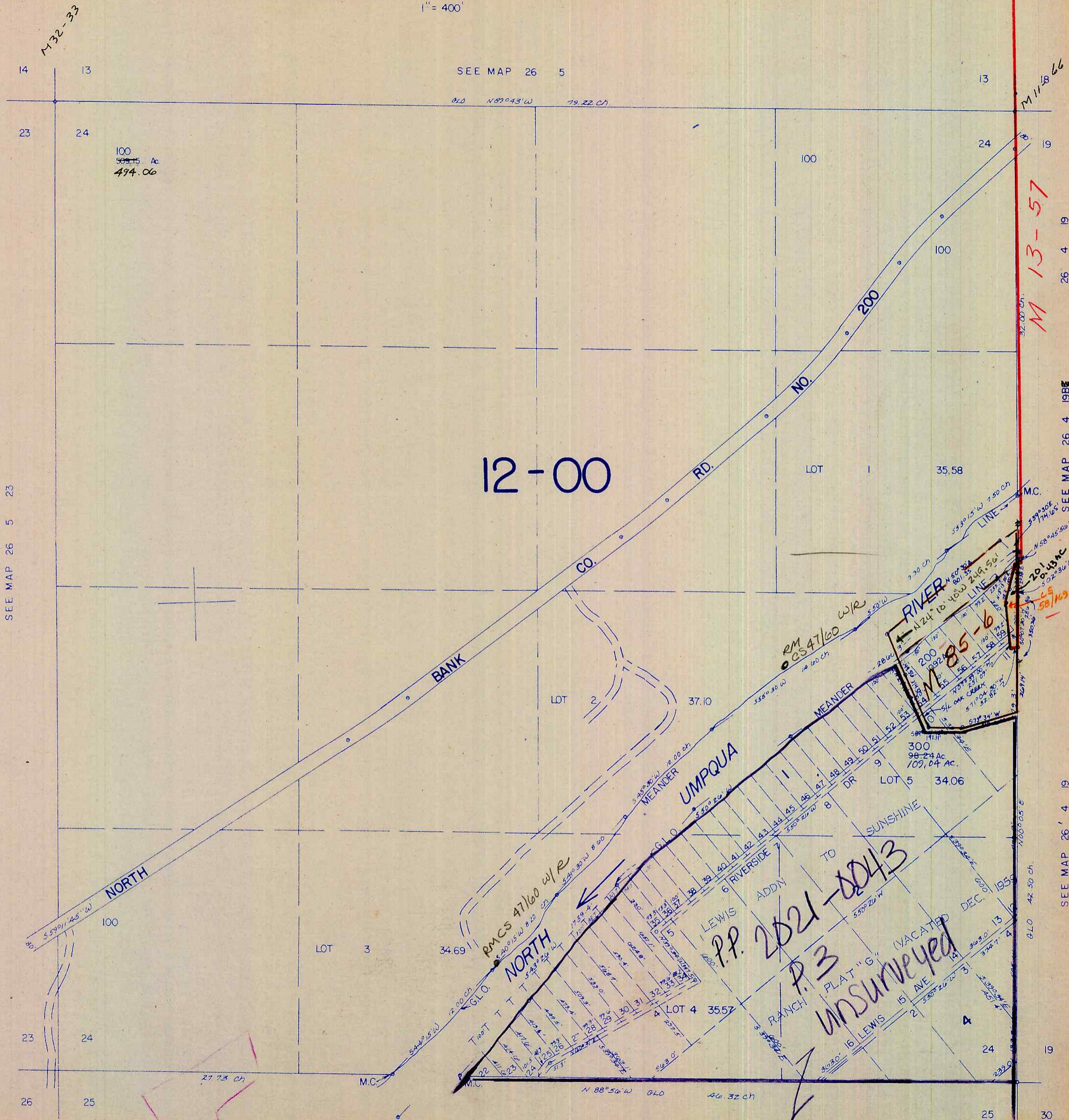


This map was prepared for assessment purpose only.

SECTION 24 T.26S. R. 5W. W.M.
DOUGLAS COUNTY

1" = 400'

26 5 24



SEE MAP 26 5 23

SEE MAP 26 5

SEE MAP 26 4 1988

SEE MAP 26 4 19

SEE MAP 26 5 25

26 5 24

05.000

270.000

10/21/22