

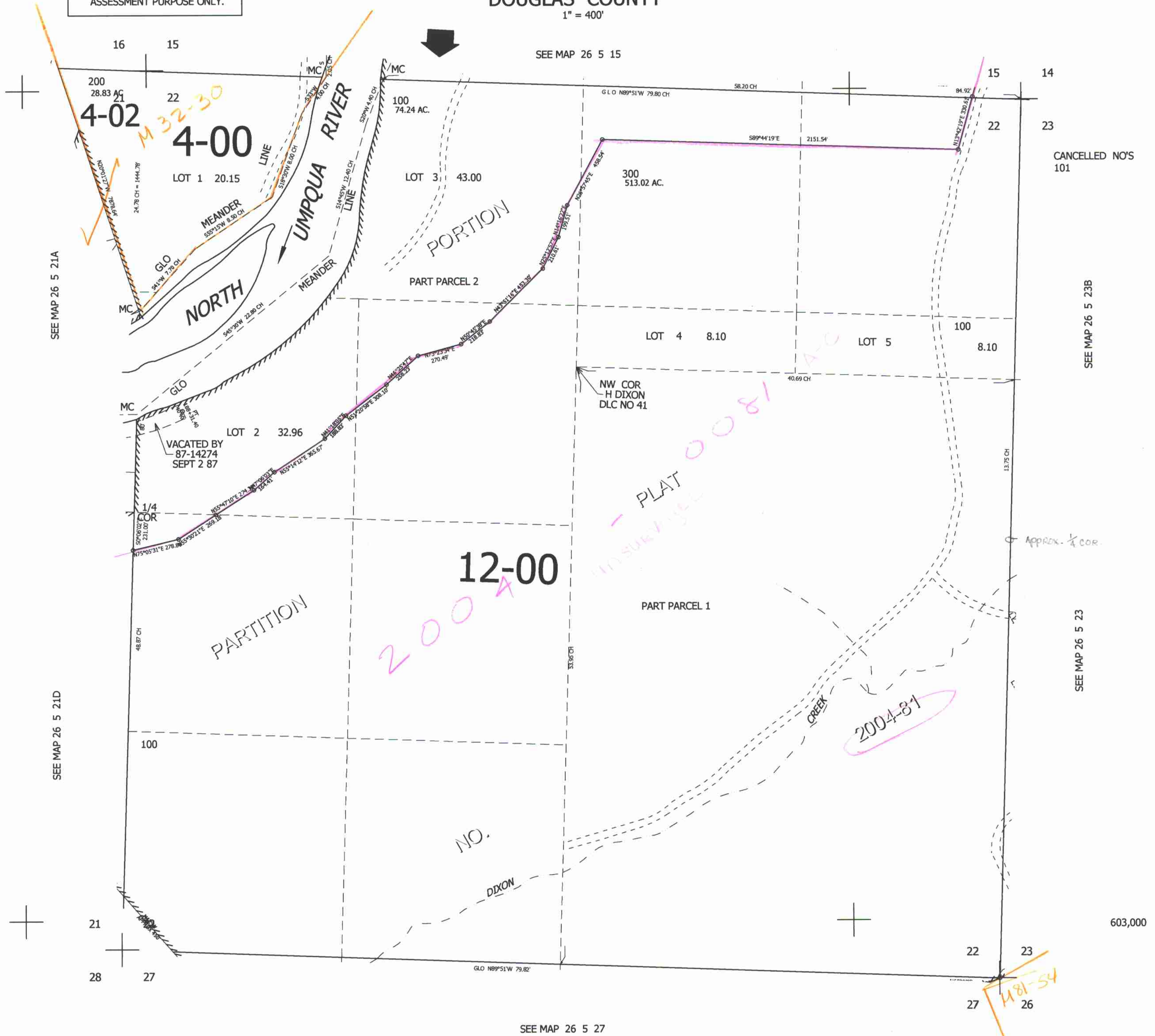
THIS MAP WAS PREPARED FOR ASSESSMENT PURPOSE ONLY.

SEC.22 T.26S. R.5W. W.M. DOUGLAS COUNTY

REVISED ON 3-3-05

26 5 22

1" = 400'



CANCELLED NO'S 101

SEE MAP 26 5 23B

SEE MAP 26 5 23

603,000

26 5 22

4,184,000

3/2005

1481-54

SEE MAP 26 5 27

SEE MAP 26 5 21D

SEE MAP 26 5 21A

SEE MAP 26 5 15

4-00

12-00

PLAT 0081

2004-81

NO.

DIXON

CREEK

NORTH

PORTION

PART PARCEL 2

PART PARCEL 1

VACATED BY 87-14274 SEPT 2 87

NW COR H DIXON DLC NO 41

APPROX. 1/4 COR

200

22

100

LOT 3 43.00

300 513.02 AC.

LOT 1 20.15

LOT 2 32.96

LOT 4 8.10

LOT 5 8.10

100

1/4 COR

100

21

28

27

22

27

23

26

14

23

100

8.10

13/75 CH

13/75 CH

13/75 CH

22

23

16

15

15

22

100

8.10

13/75 CH

13/75 CH

13/75 CH

22

23

28.83

4-02

21

22

20.15

24.78 CH = 1444.78'

54°14'W 7.78 CH

54°32'W 22.88 CH

50°07'W 21.00 CH

50°07'W 21.00 CH

50°07'W 21.00 CH

50°07'W 21.00 CH

50°07'W 21.00 CH

50°07'W 21.00 CH

50°07'W 21.00 CH

50°07'W 21.00 CH

50°07'W 21.00 CH

50°07'W 21.00 CH

50°07'W 21.00 CH

50°07'W 21.00 CH

50°07'W 21.00 CH

50°07'W 21.00 CH

50°07'W 21.00 CH

50°07'W 21.00 CH

50°07'W 21.00 CH

50°07'W 21.00 CH

50°07'W 21.00 CH

50°07'W 21.00 CH

50°07'W 21.00 CH

50°07'W 21.00 CH

50°07'W 21.00 CH