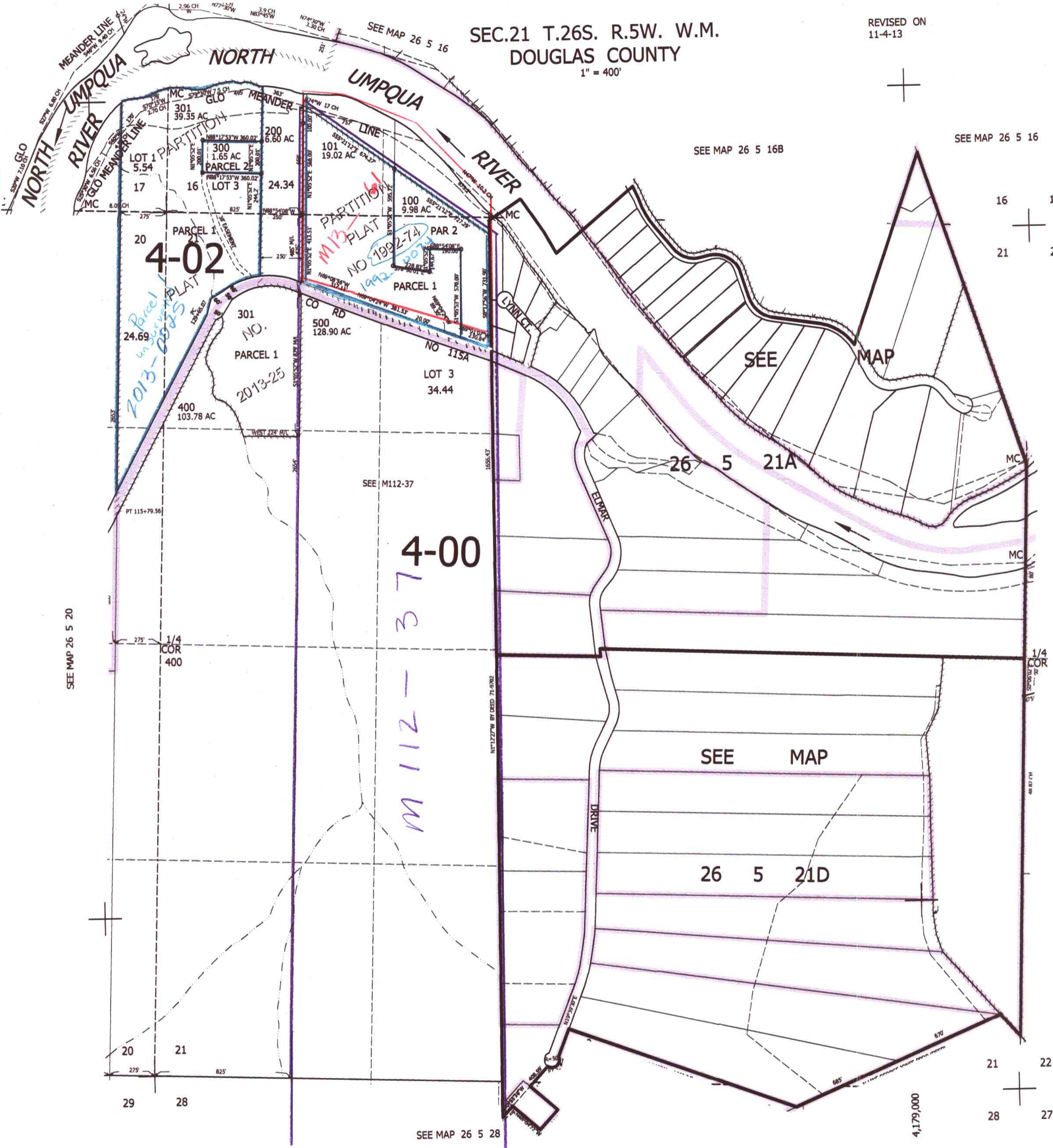


THIS MAP WAS PREPARED FOR ASSESSMENT PURPOSE ONLY.

SEC.21 T.26S. R.5W. W.M. DOUGLAS COUNTY
1" = 400'

REVISED ON 11-4-13

26 5 21 & INDEX



SEE MAP 26 5 20

SEE MAP 26 5 16B

SEE MAP 26 5 16

CANCELLED NO'S 401

SEE MAP 26 5 22

604,000

CW 4/13/13

26 5 21 & INDEX

SEE MAP 26 5 28

4,179,000