

THIS MAP WAS PREPARED FOR ASSESSMENT PURPOSE ONLY.

Upper Left:
123°19'59"W 43°18'16"N
4167350E 609670N ft

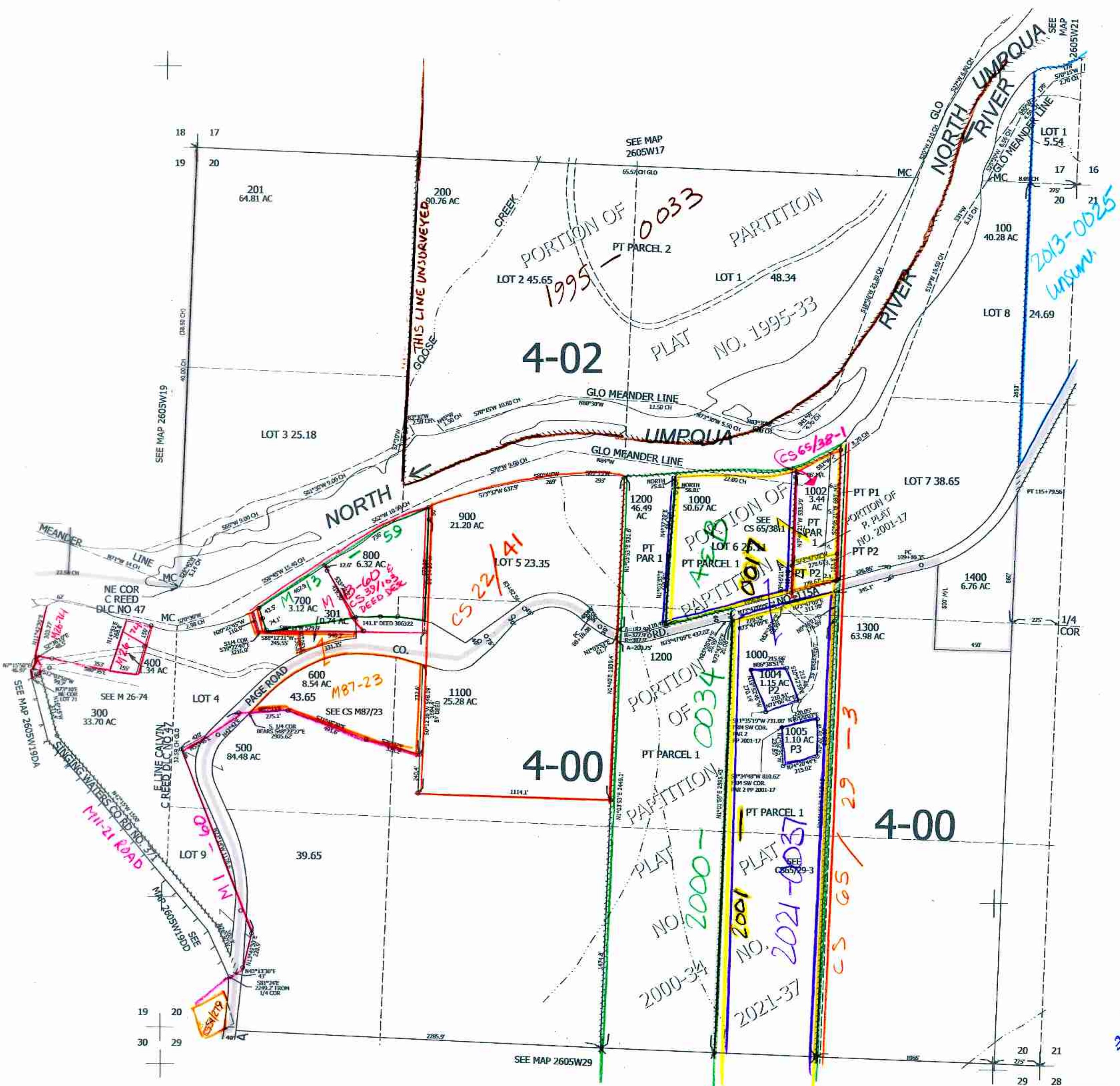
SEC.20 T.26S. R.05W. W.M.
DOUGLAS COUNTY
1" = 400'

Date Exported 2025-01-08

200520

CANCELLED NOS:
1001 1201 1003
1006

- PARCEL 1002
1. S72°M303°W 88.55'
 2. N1°22'35"E 33.60'
 3. N0°49'46"E 165.66'
 4. N0°57'35"E 108.99'
 5. N0°58'15"E 223.92'
 6. N0°50'48"W 135.95'
 7. N0°49'25"W 615.94'



19 20
30 29

20 21
29 28

See
3/2025 B

260520

Lower Right:
123°18'9"W 43°17'10"N
4175199E 602715N ft