

SE 1/4 SE 1/4 SEC. 19 T.26S. R. 5W.W.M.  
DOUGLAS COUNTY

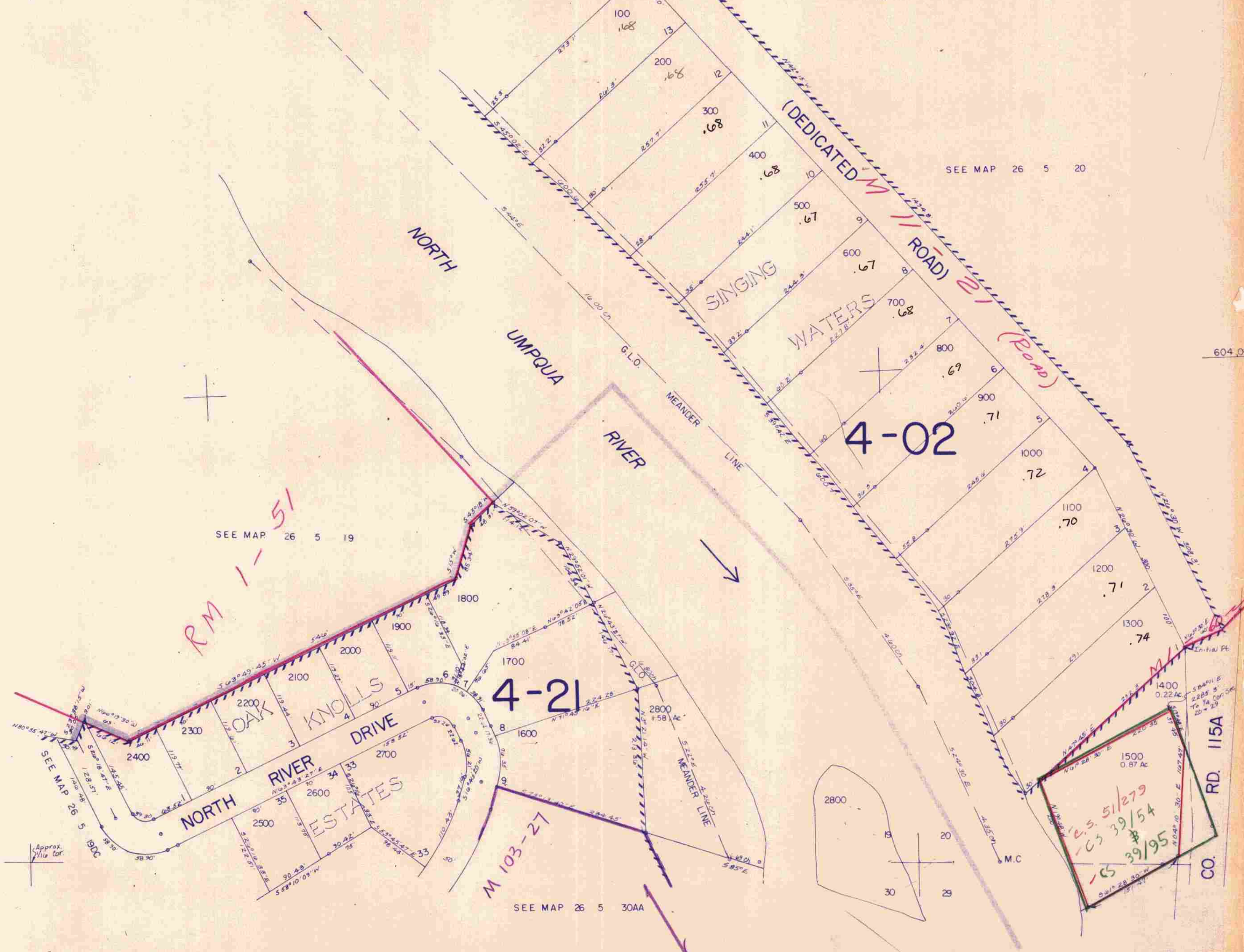
26 5 19DD

This map was prepared for  
assessment purpose only.

SEE MAP 26 5 19DA

1" = 100'

SEE MAP 26 5 20



SEE MAP 26 5 19

RM 1-51

4-21

4-02

M 103-27

SEE MAP 26 5 30AA

SEE MAP 26 5 19DC

Approx. 1/4 Cor.

604.000

RD. 115A  
CO.

26 5 19DD

247,000

LD 2/26/81

10/8