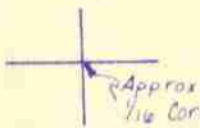


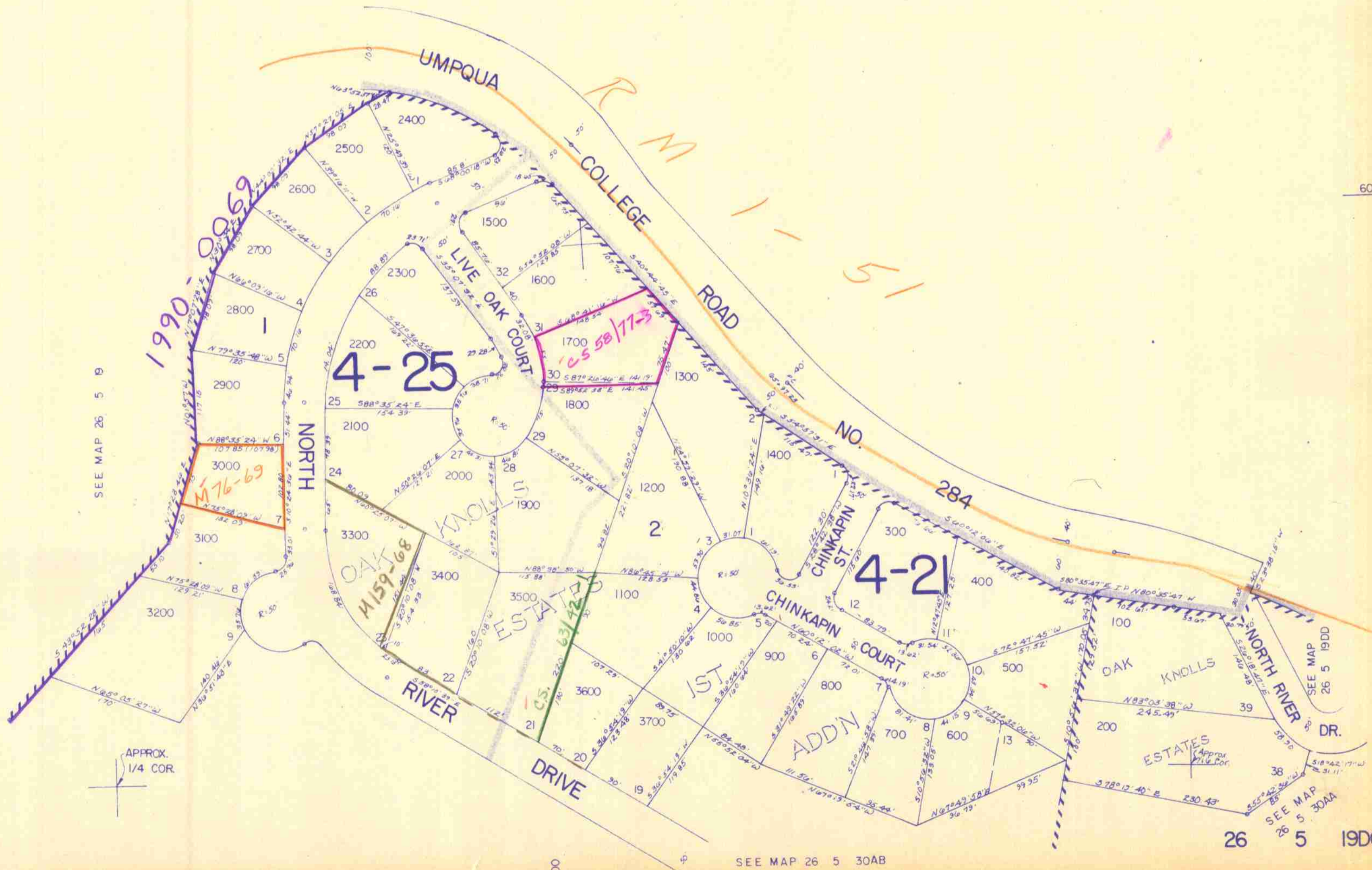
SW1/4 SE1/4 SEC. 19 T.26S. R. 5W.W.M.
DOUGLAS COUNTY

26 5 19DC

1" = 100'



SEE MAP 26 5 19



SEE MAP 26 5 9

APPROX. 1/4 COR.

604

SEE MAP 26 5 19DD

SEE MAP 26 5 30AA

26 5 19DC

SEE MAP 26 5 30AB

246,000