

NE 1/4 SE 1/4 SEC. 19 T. 26S. R. 5W. WM.  
DOUGLAS COUNTY

26 5 19DA

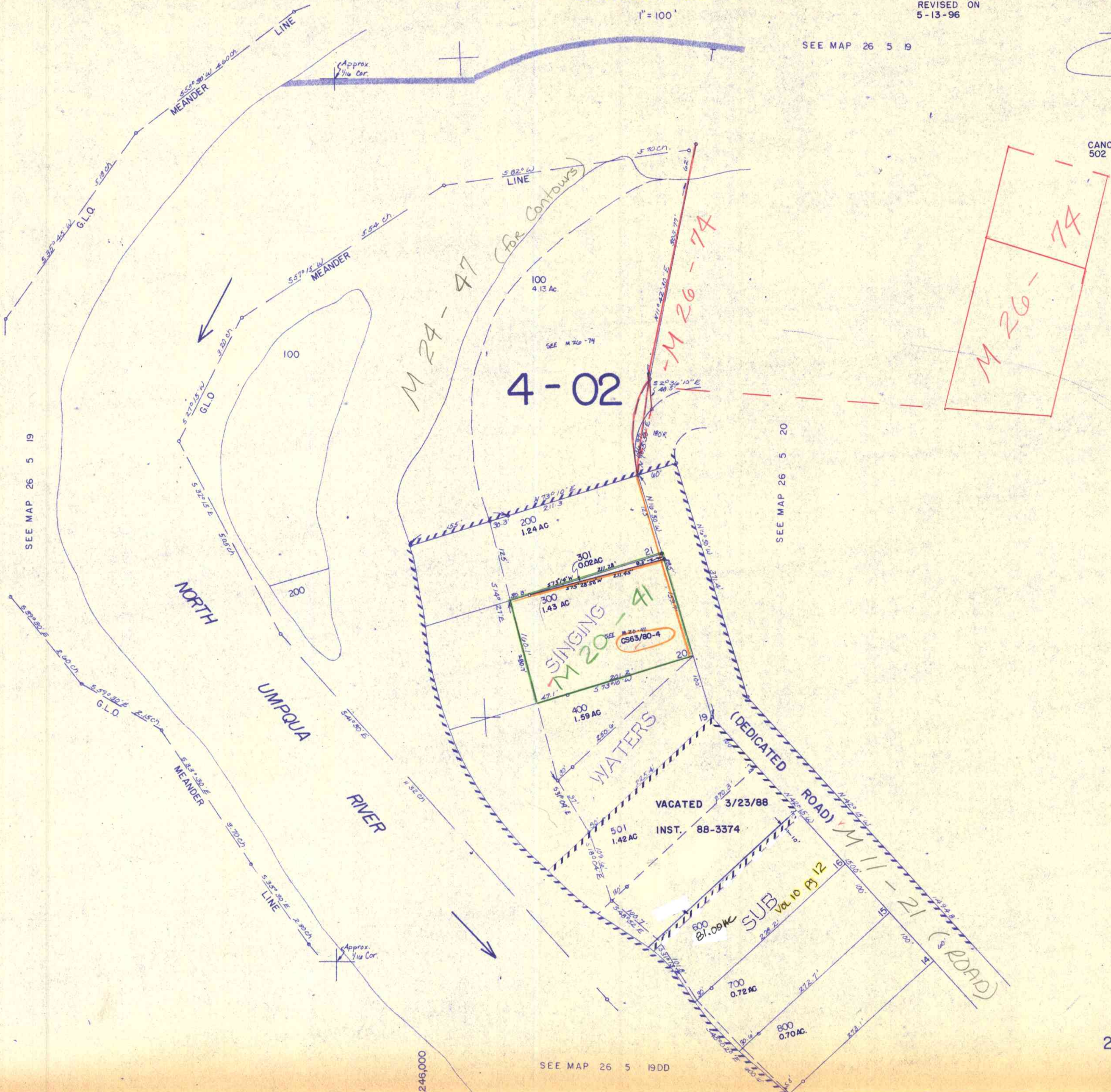
REVISED ON  
5-13-96

1" = 100'

SEE MAP 26 5 19

APPROX  
1/4 COR.  
M.C.

CANCELLED NO. 5  
502



SEE MAP 26 5 19

SEE MAP 26 5 20

605.00

2/23/81

SEE MAP 26 5 19DD

26 5 19DA

APPROX  
1/4 COR.  
M.C.