

THIS MAP WAS PREPARED FOR ASSESSMENT PURPOSE ONLY.

SE 1/4 SW 1/4 SEC 19 T 26 S R 5 W WM.
DOUGLAS COUNTY

REVISED ON
11-18-91

26 5 19CD

1"=100'

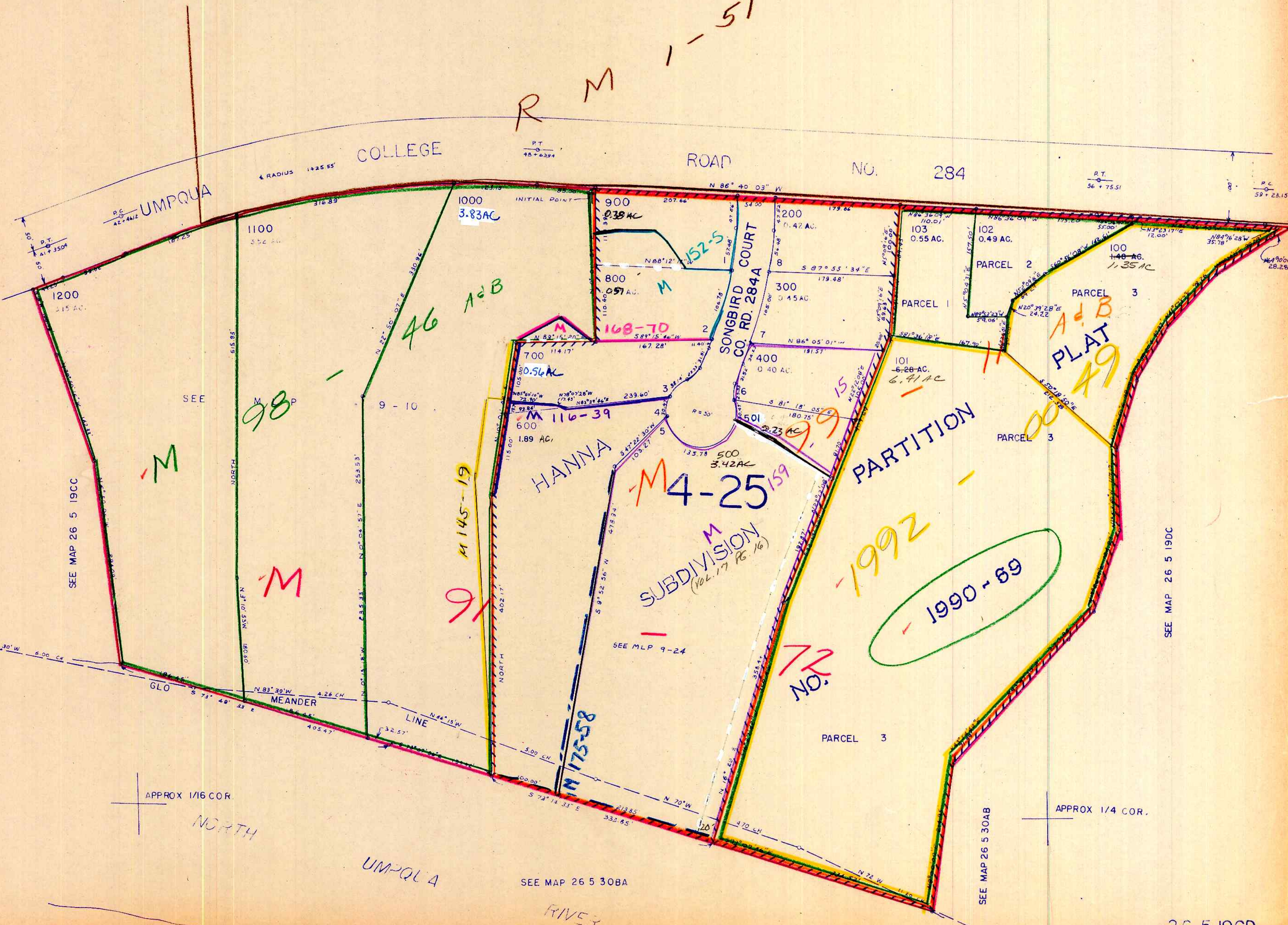
APPROX 1/16 COR.

APPROX 1/16 COR.

SEE MAP 26 5 19

CANCELLED NO'S
701

R M 1-51



SEE MAP 26 5 19CC

SEE MAP 26 5 19DC

APPROX 1/16 COR.

APPROX 1/4 COR.

SEE MAP 26 5 30BA

SEE MAP 26 5 30AB

26 5 19CD

11/19/91