

MAP WAS PREPARED FOR
ASSESSMENT PURPOSE ONLY.

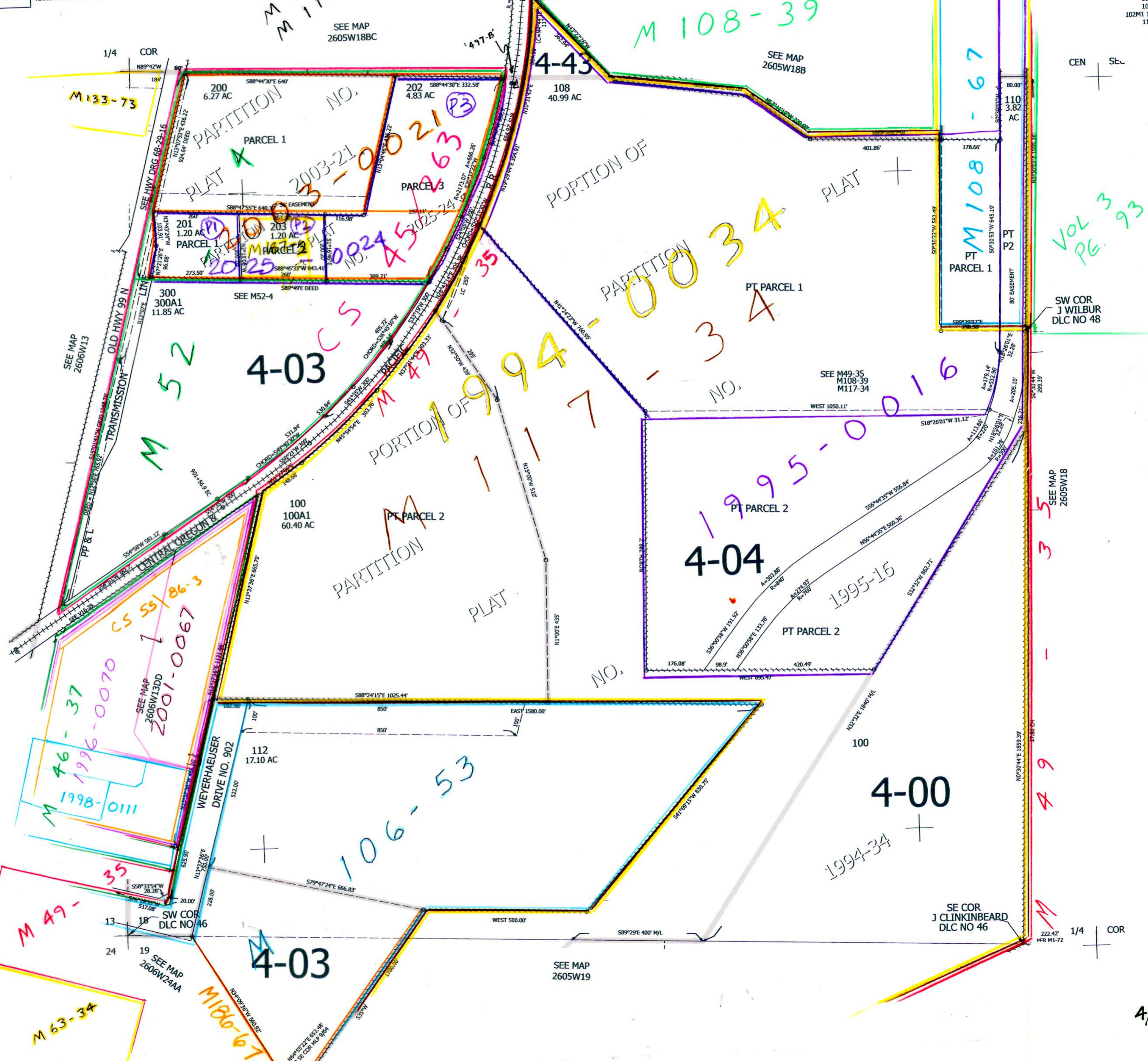
Upper Left:
123°20'59"W 43°18'35"N
4162969E 611735N R

SW1/4 SEC. 18 T. 26S. R. 05W. W.M.
DOUGLAS COUNTY

Date Exported 2025-10-22

& INDEX

- CANCELLED NOS:
- 103 106 103M1
- 109 104 101M1
- 102M1 105M1 108M1
- 110M1 101 301
- 111 107 113
- 114 102 105
- 204



VOL 3
PG 93

SW COR
J WILBUR
DLC NO 48

SEE MAP
2605W18

1/4 COR

4/03 JP

260518
& INDE

Lower Right:
123°20'4\"/>