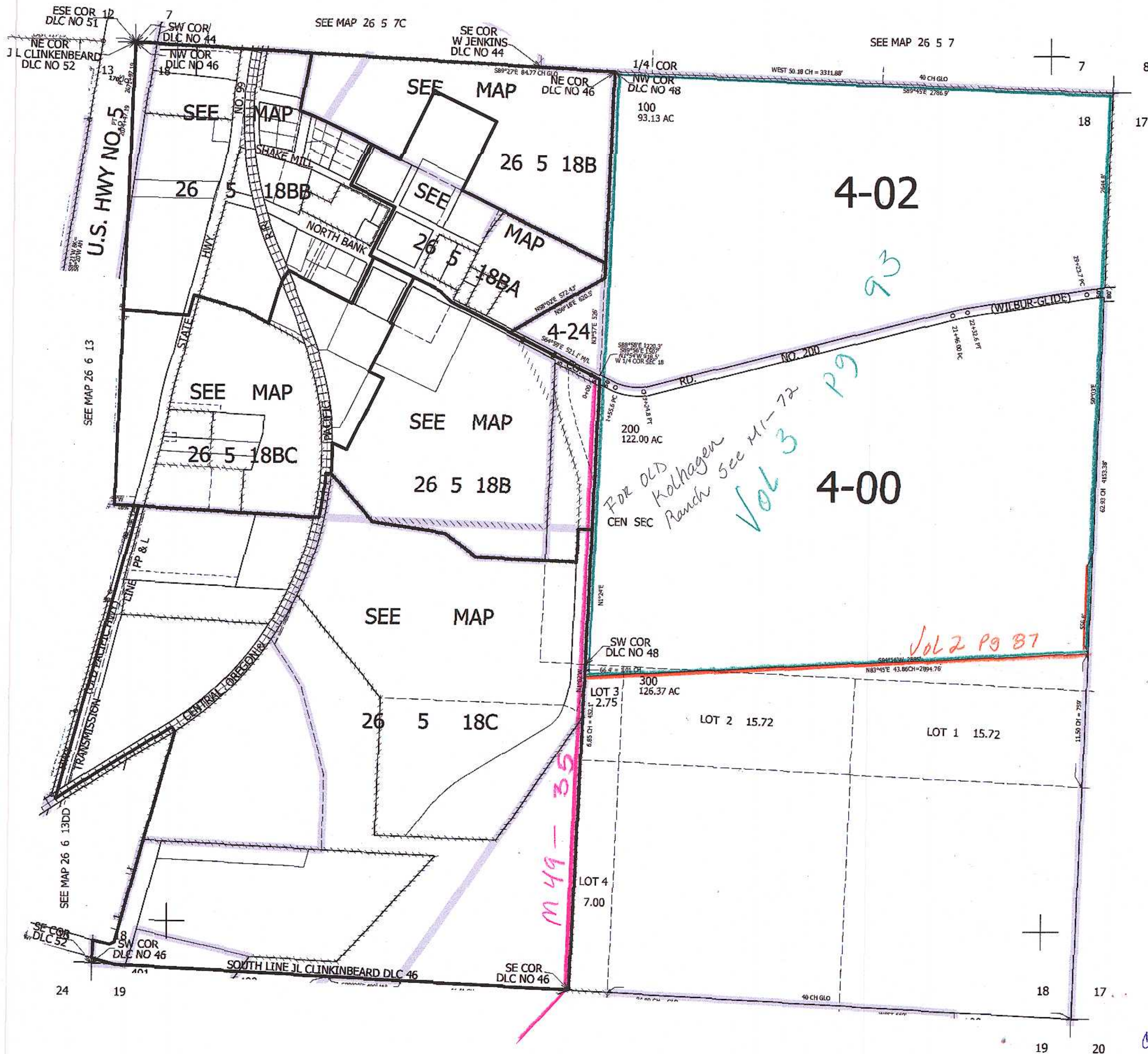


THIS MAP WAS PREPARED FOR ASSESSMENT PURPOSE ONLY.

SEC.18 T.26S. R.5W. W.M.
DOUGLAS COUNTY
1" = 400'

REVISED ON
3-30-16

26 5 18
& INDEX



CANCELLED NO'S

SEE MAP 26 5 17

609,000

cm 3/30/14
scv

26 5 18
& INDEX

SEE MAP 26 5 19

4,169,000

M 49-35

FOR OLD Kolhagen Ranch See M 1-72
Vol 3 P 9

4-02

4-00

Vol 2 P 9 B7

93

P 9