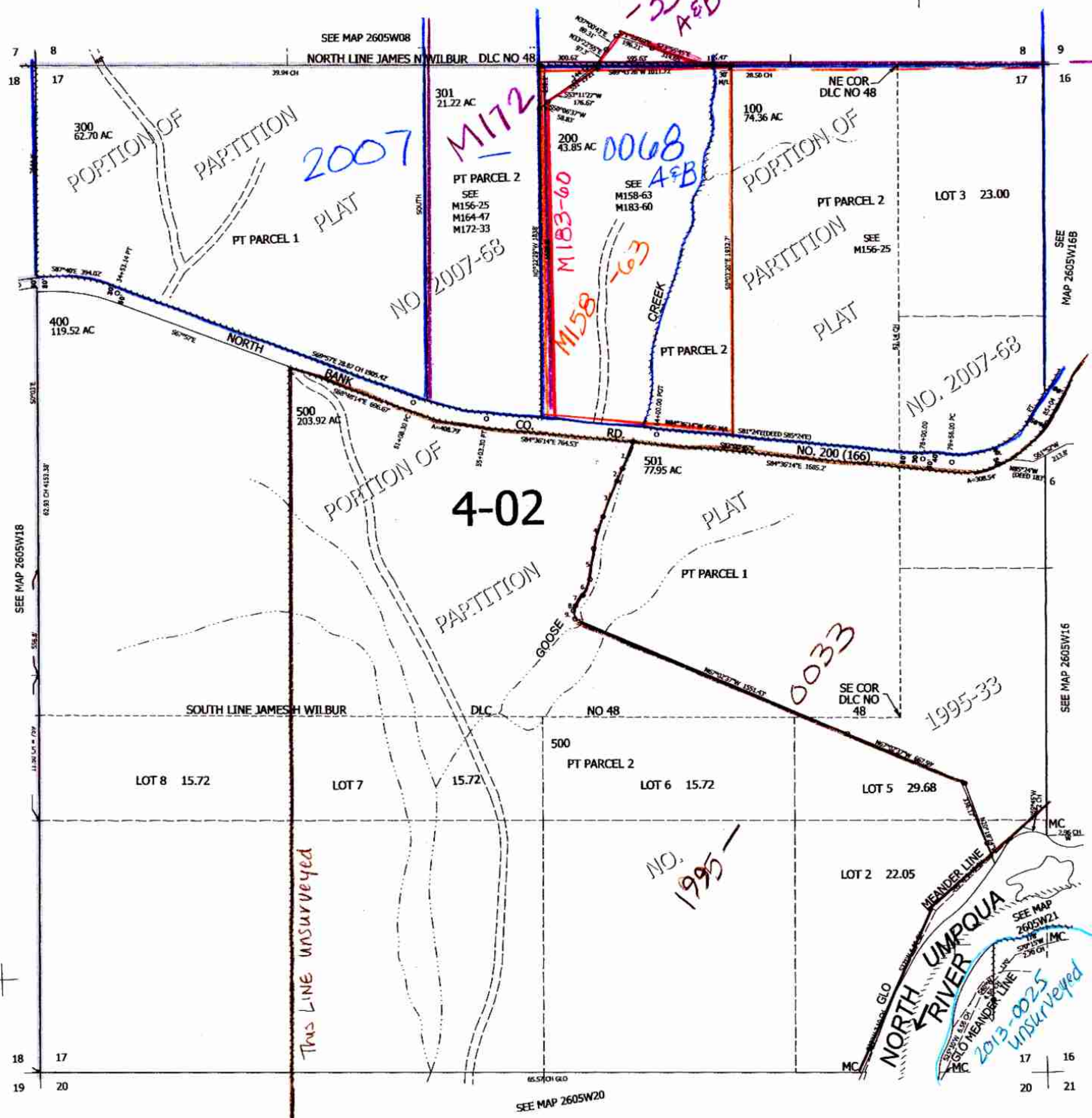


SEC.17 T.26S. R.05W. W.M.
DOUGLAS COUNTY
1" = 400'

CANCELLED NOS:
300A1 201 101

THIS MAP WAS PREPARED FOR
ASSESSMENT PURPOSE ONLY.

- PARCEL 501
 1. S20°58'38"W 164.16'
 2. S24°24'45"W 70.77'
 3. S21°52'51"W 201'
 4. S16°18'29"W 174.26'
 5. S6°38'20"W 163.51'
 6. S24°00'05"W 91.01'
 7. S36°27'15"W 67.62'
 8. S22°19'W 28.31'
 9. S11°12'14"E 43.01'



5/20/24 B
JCW

26051

Lower Right:
123°18'3"W 43°17'59"N
4175875E 6076520N R