

THIS MAP WAS PREPARED FOR ASSESSMENT PURPOSE ONLY.

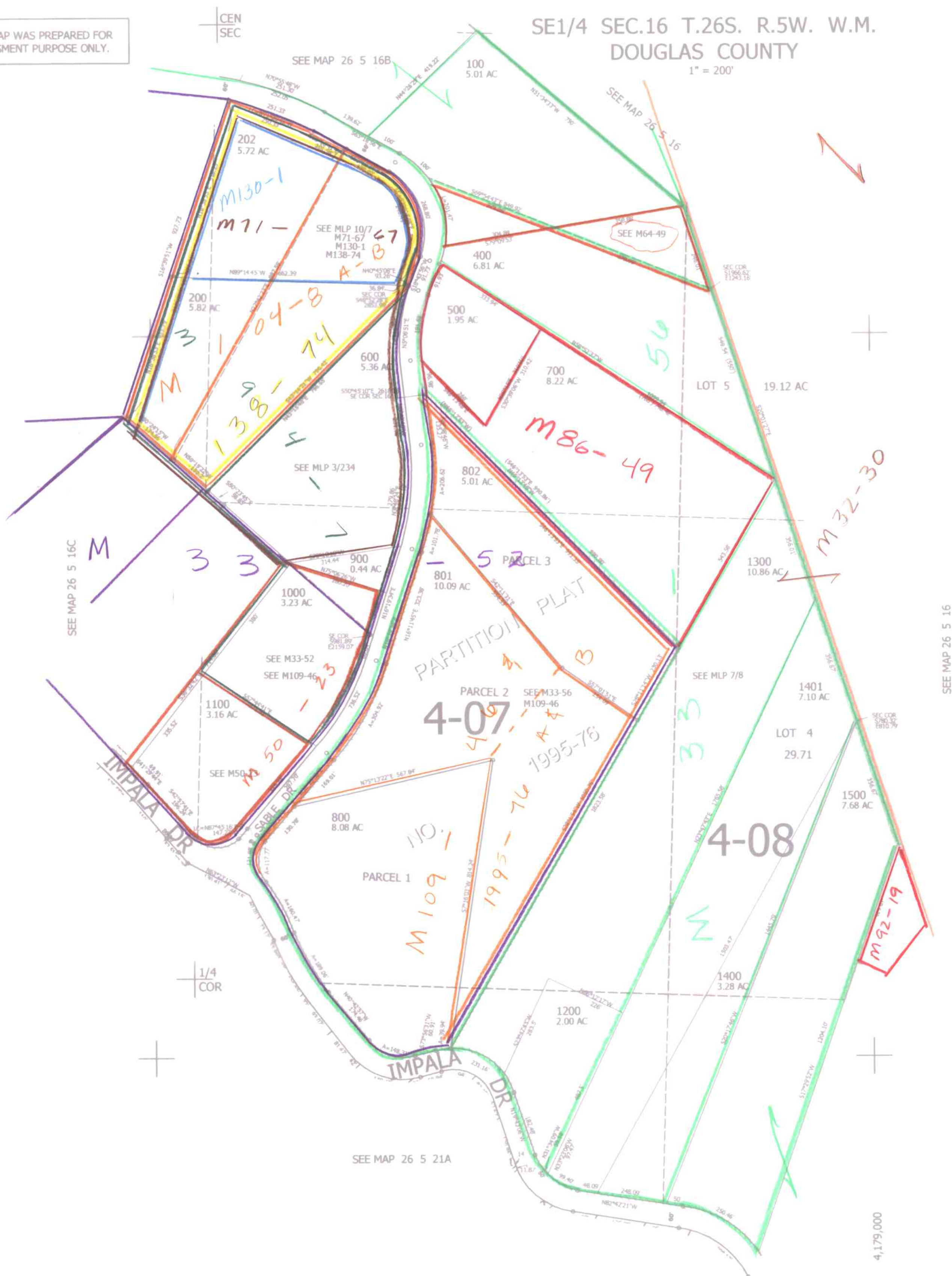
CEN
SEC

SE1/4 SEC.16 T.26S. R.5W. W.M.
DOUGLAS COUNTY
1" = 200'

REVISED ON
5-2-13

26 5 16D
1/4
COR

CANCELLED NO'S
300 203 201
204



SEE MAP 26 5 16C

SEE MAP 26 5 16

SEE MAP 26 5 21A

1/4
COR

16 15
21 22

608,000

4,179,000

CM

JC ✓

26 5 16D