

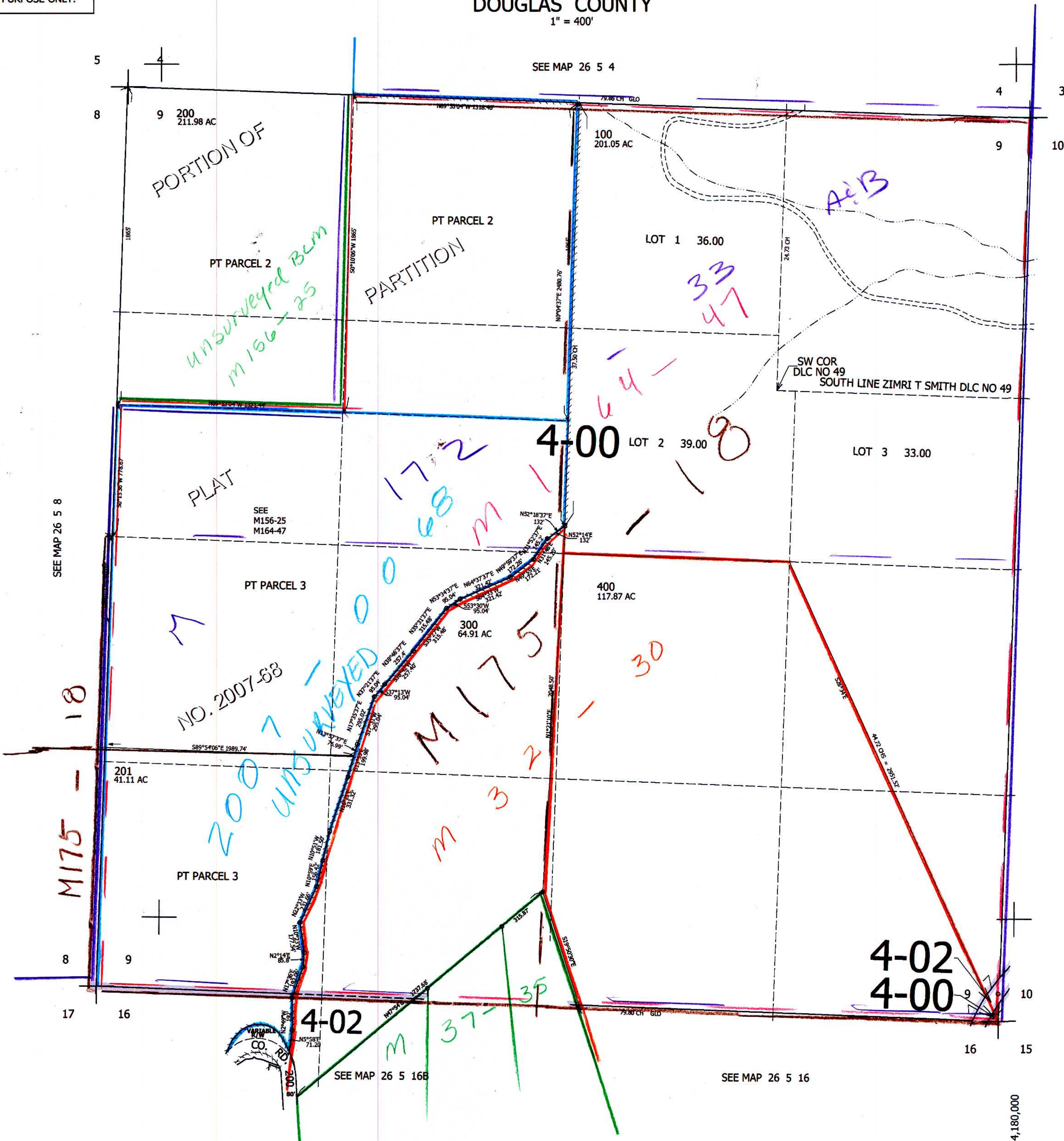
THIS MAP WAS PREPARED FOR ASSESSMENT PURPOSE ONLY.

SEC.9 T.26S. R.5W. W.M.
DOUGLAS COUNTY

1" = 400'

REVISED ON
6-22-16

26 5 9



CANCELLED NO'S
100M1 202 203

SEE MAP 26 5 10

614,000

4-02
4-00

am
7/2/16
EV

26 5 9