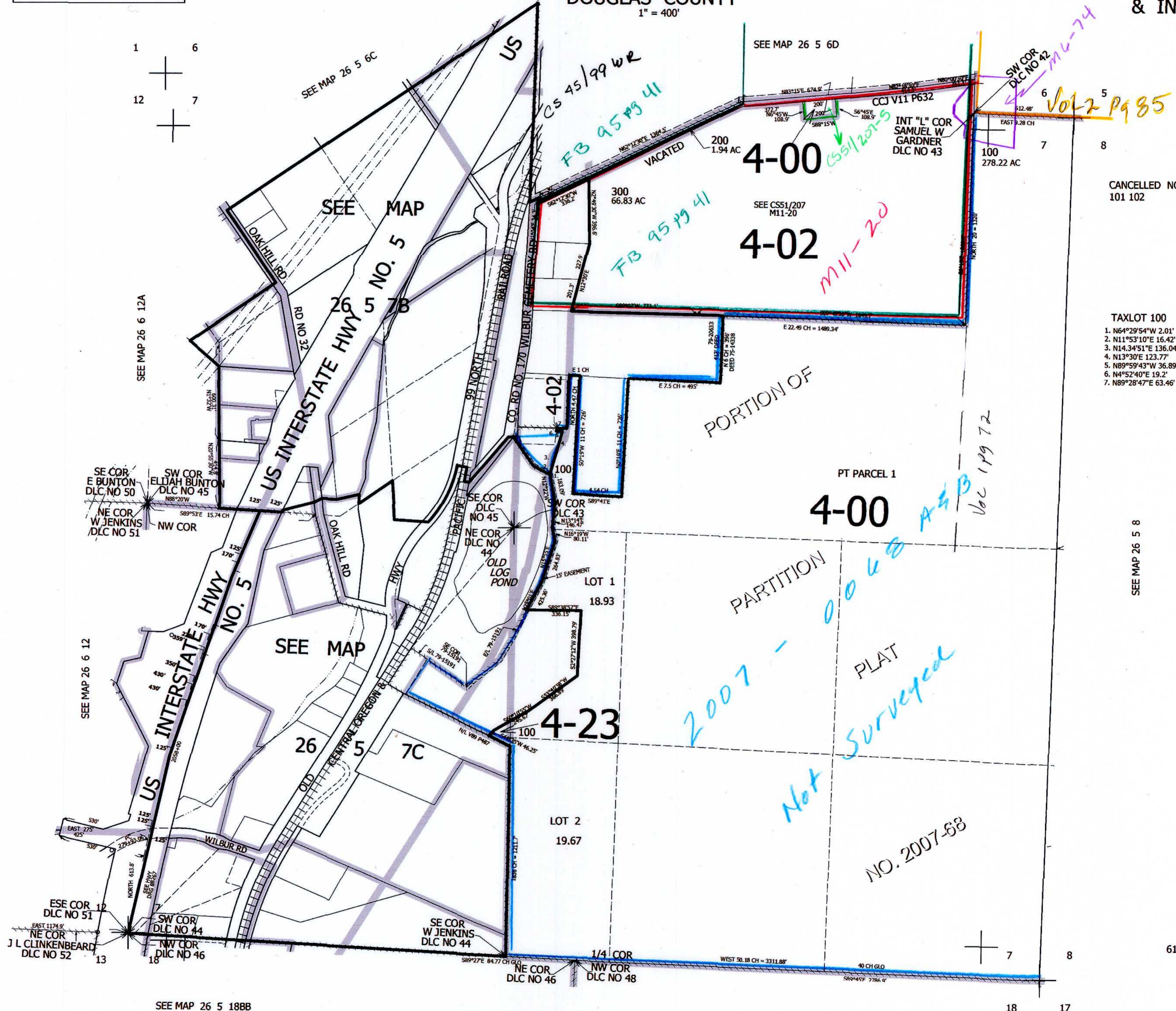
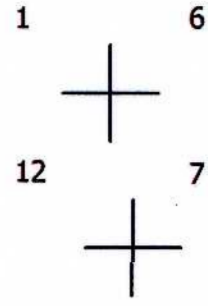


THIS MAP WAS PREPARED FOR ASSESSMENT PURPOSE ONLY.

SEC.7 T.26S. R.5W. W.M. DOUGLAS COUNTY
1" = 400'

REVISED ON 8-30-17

26 5 7 & INDEX



CANCELLED NO'S 101 102

- TAXLOT 100
1. N64°29'54"W 2.01'
 2. N11°53'10"E 16.42'
 3. N14.34'51"E 136.04'
 4. N13°30'E 123.77'
 5. N89°59'43"W 36.89'
 6. N4°52'40"E 19.2'
 7. N89°28'47"E 63.46'

2007 - 0048 A-B
Not Surveyed
NO. 2007-68

SEE MAP 26 5 8

614,000

SEE MAP 26 5 18BB

SEE MAP 26 5 18BA

SEE MAP 26 5 18

4,169,000

26 5 7 & INDEX