

THIS MAP WAS PREPARED FOR ASSESSMENT PURPOSE ONLY.

SE1/4 SEC.6 T.26S. R.5W. W.M.  
DOUGLAS COUNTY

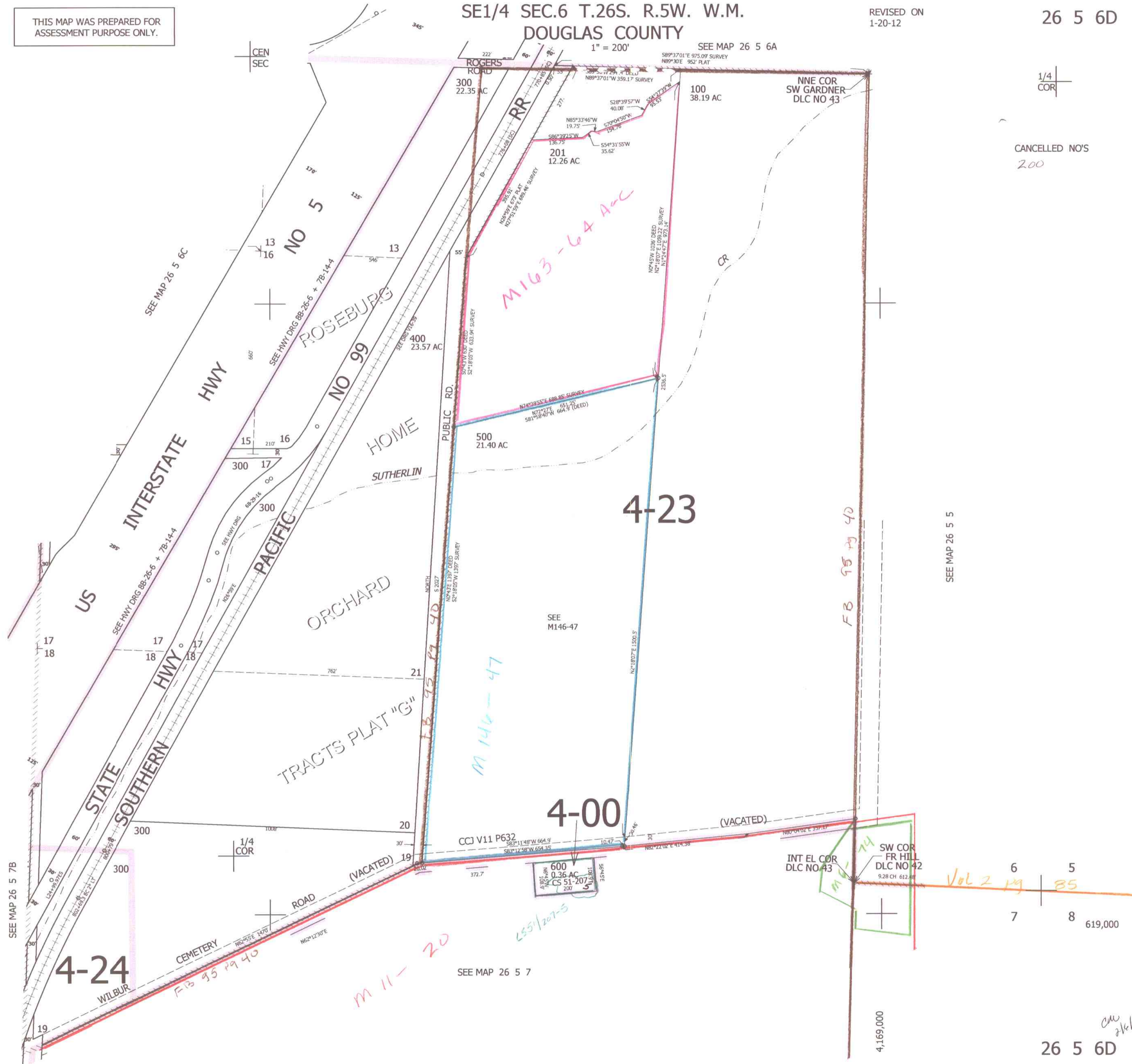
REVISED ON  
1-20-12

26 5 6D

1" = 200' SEE MAP 26 5 6A

1/4  
COR

CANCELLED NO'S  
200



SEE MAP 26 5 5

6	5
7	8

619,000

26 5 6D

am  
2/16/12