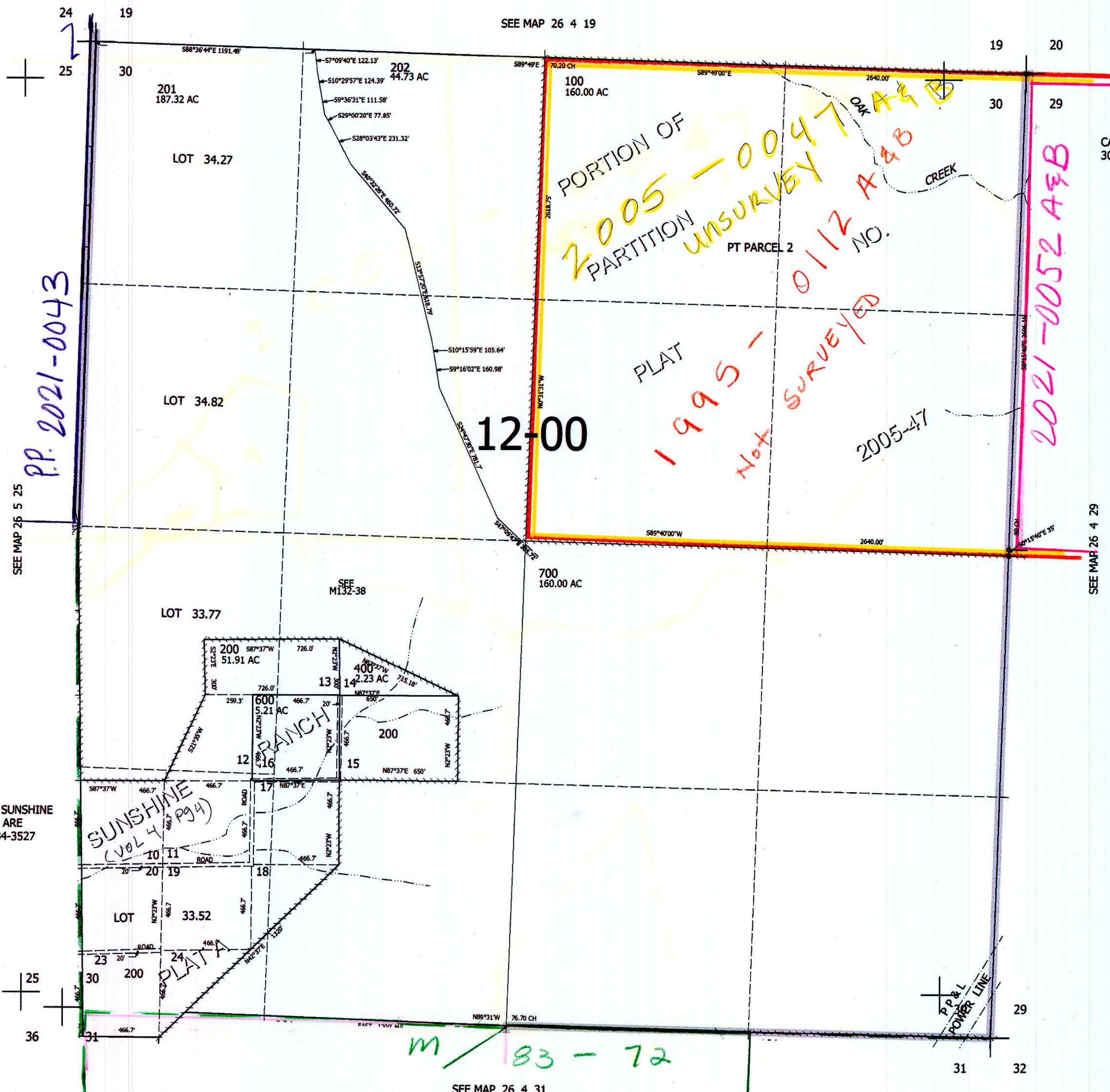


THIS MAP WAS PREPARED FOR ASSESSMENT PURPOSE ONLY.

SEC.30 T.26S. R.4W. W.M.
DOUGLAS COUNTY
1" = 400'

REVISED ON
5-9-14

26 4 30



PP. 2021-0043

PORTION OF
2005-0047
PARTITION
UNSURVEYED
PT PARCEL 2
NO.

1995-0112
NOT SURVEYED

2021-0052 A&B

12-00

2005-47

SUNSHINE RANCH
(VOL 4 Pg 4)

PLATA

M 83-72

NOTE:
ALL STREETS IN SUNSHINE RANCH PLAT "A" ARE VACATED INST. 84-3527

CANCELLED NO'S
300 500

SEE MAP 26 5 25

SEE MAP 26 4 19

SEE MAP 26 4 29

SEE MAP 26 4 31

4,200,000

597,000

26 4 30