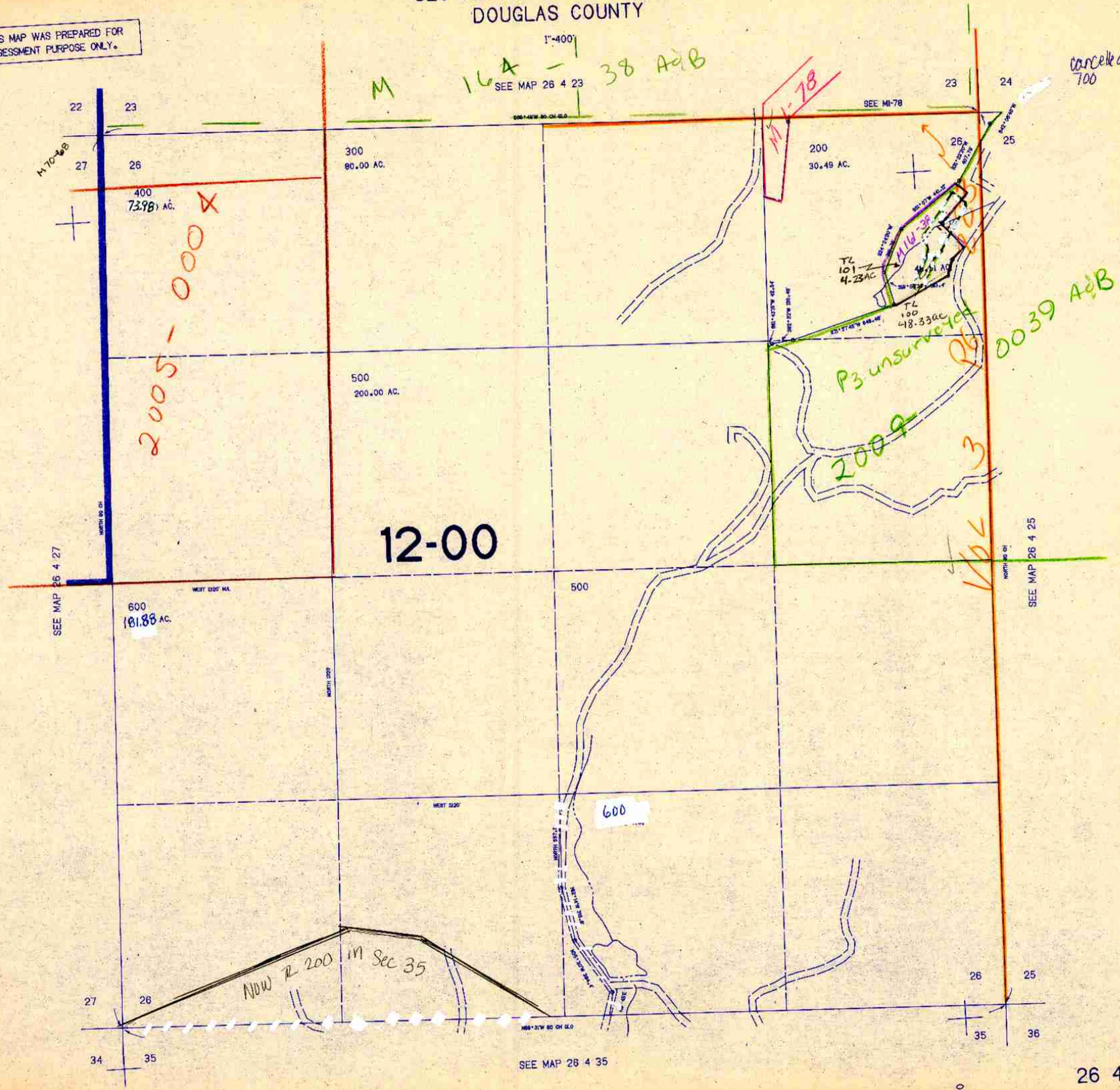


SECTION 26 T.26S. R.4W. W.M.
DOUGLAS COUNTY

THIS MAP WAS PREPARED FOR
ASSESSMENT PURPOSE ONLY.



Cancelled:
700

12-00

2005-000 X

MI-78

P3 unsurveyed

0039 A+B

2009
164
3

NW 1/4 200 in Sec 35

596.000

1300.000

A/B