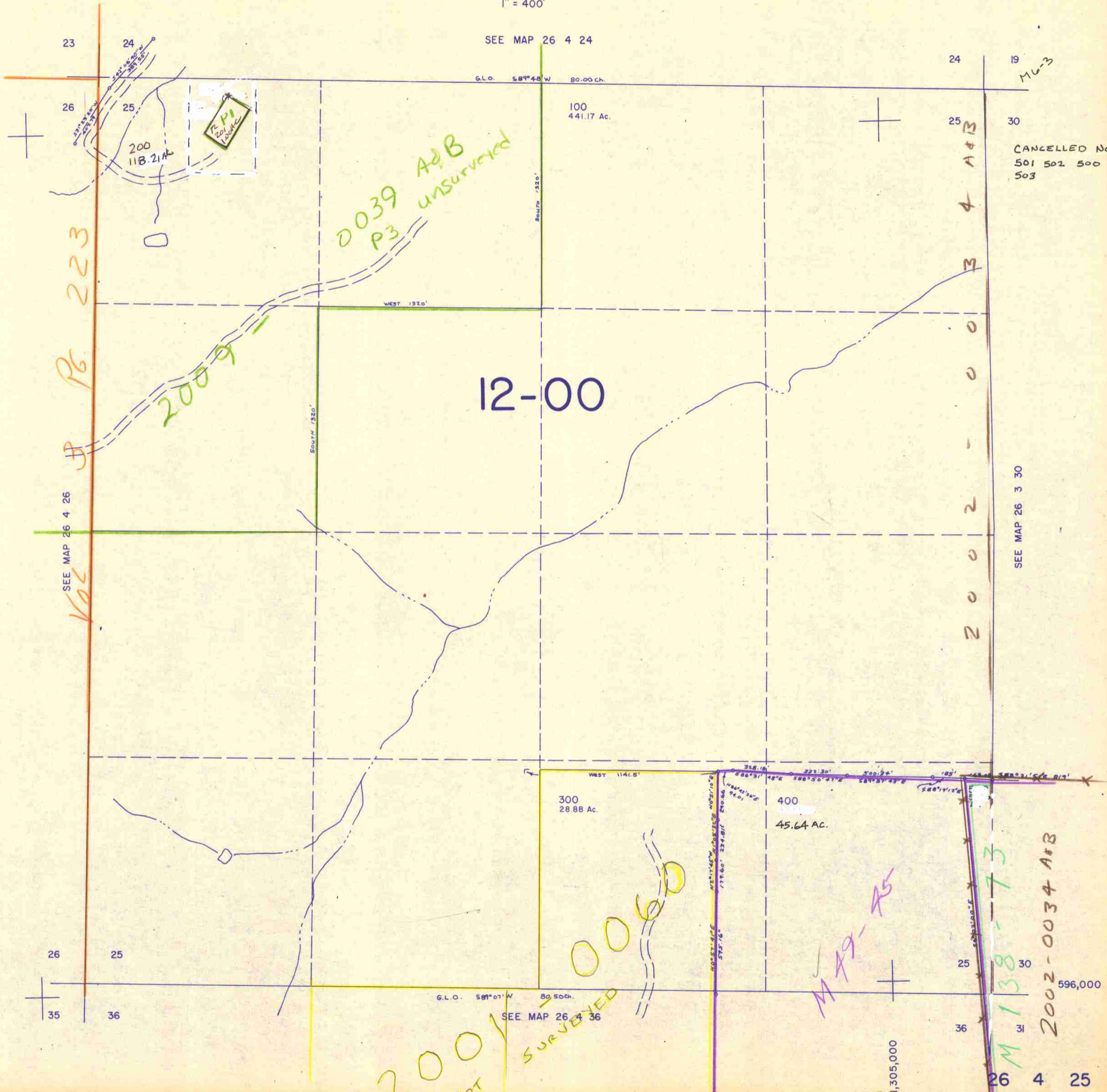


SECTION 25 T.26S. R.4W. W.M.
DOUGLAS COUNTY

26 4 25

1" = 400'

THIS MAP WAS PREPARED FOR
ASSESSMENT PURPOSE ONLY.



CANCELLED No's
501 502 500
503

2001
NOT
SURVEYED

M 138-73
2002-0034 A+B

M 149-45

105/28