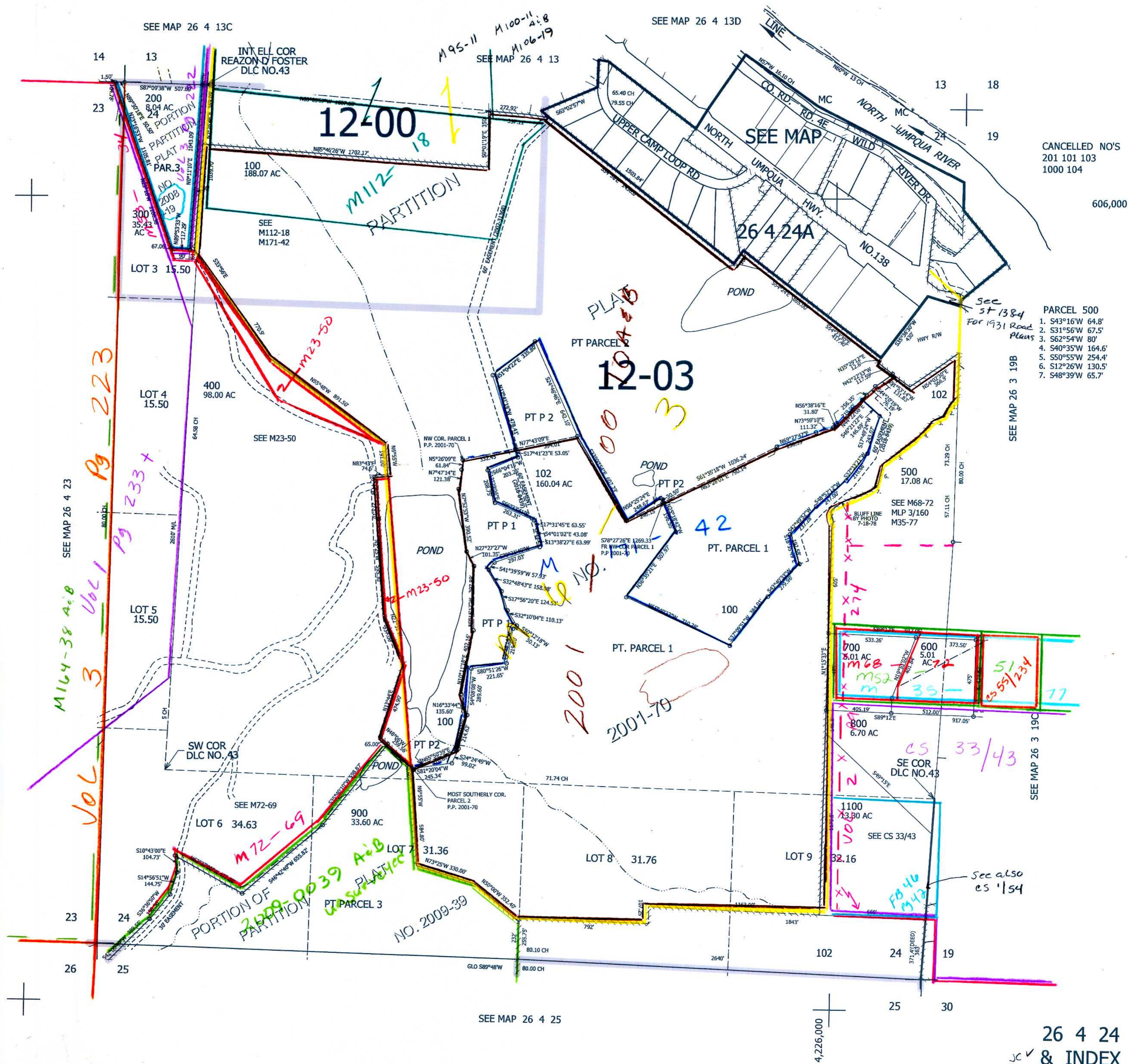


THIS MAP WAS PREPARED FOR ASSESSMENT PURPOSE ONLY.

SEC.24 T.26S. R.4W. W.M. DOUGLAS COUNTY
1" = 400'

REVISED ON 5-31-18

26 4 24 & INDEX



CANCELLED NO'S
201 101 103
1000 104

606,000

PARCEL 500
 1. S43°16'W 64.8'
 2. S31°56'W 67.5'
 3. S62°54'W 80'
 4. S40°35'W 164.6'
 5. S50°55'W 254.4'
 6. S12°26'W 130.5'
 7. S48°39'W 65.7'

SEE MAP 26 3 19B

SEE MAP 26 3 19C

See also
cs 154

SEE MAP 26 4 25

4,226,000

26 4 24 & INDEX