

NW1/4 SEC. 19 T.26S. R.4W. W.M.  
DOUGLAS COUNTY

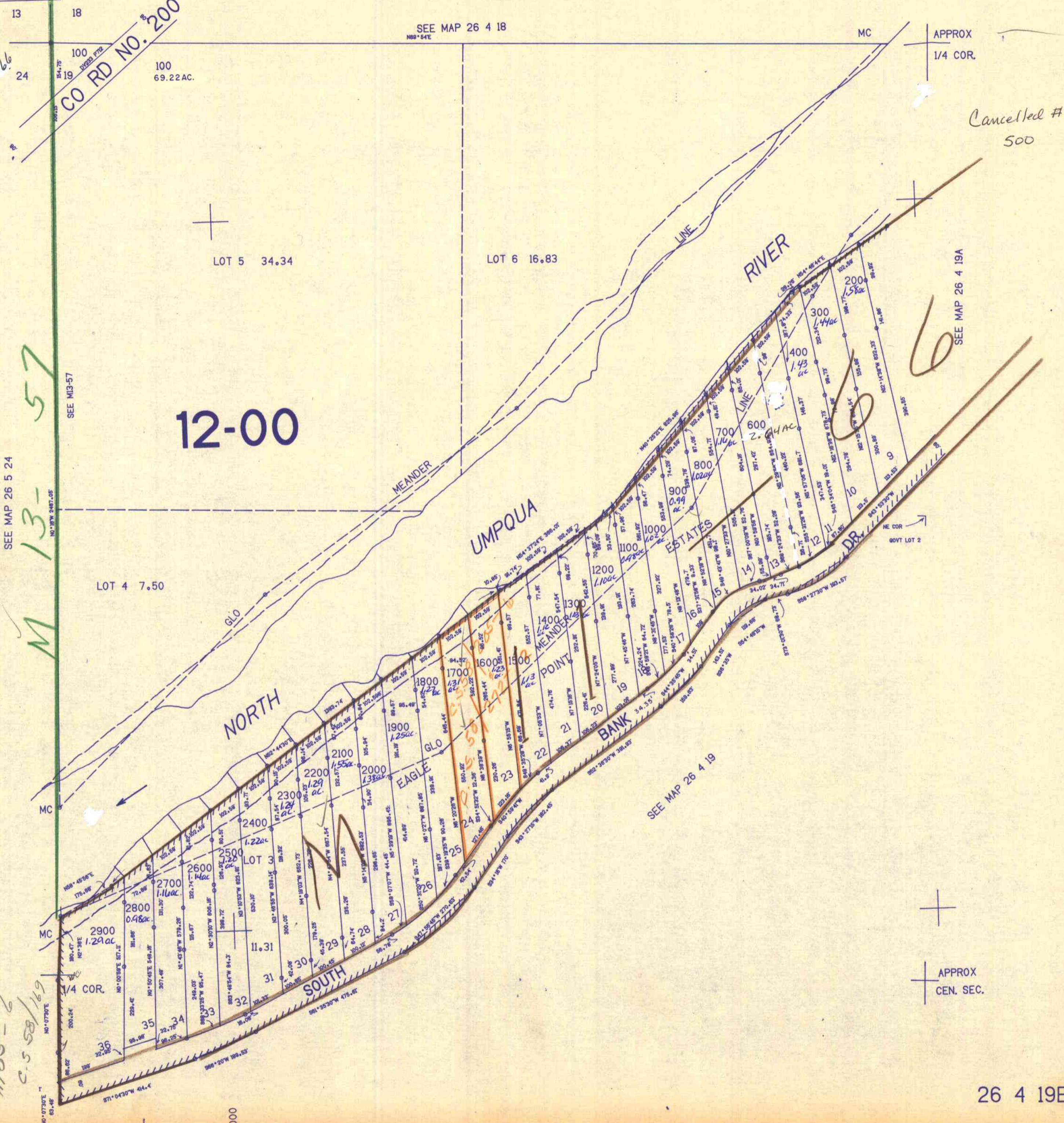
26 4 19B

THIS MAP WAS PREPARED FOR  
ASSESSMENT PURPOSE ONLY.

1"=200'

SEE MAP 26 4 18  
N89°54'E

APPROX  
1/4 COR.



Cancelled #  
500

SEE MAP 26 4 19A

SEE MAP 26 5 24

M 13-57

M 85-6  
C.S. 58/169

SEE MAP 26 4 19

APPROX  
CEN. SEC.

605.000

1275.000

26 4 19B

185/218