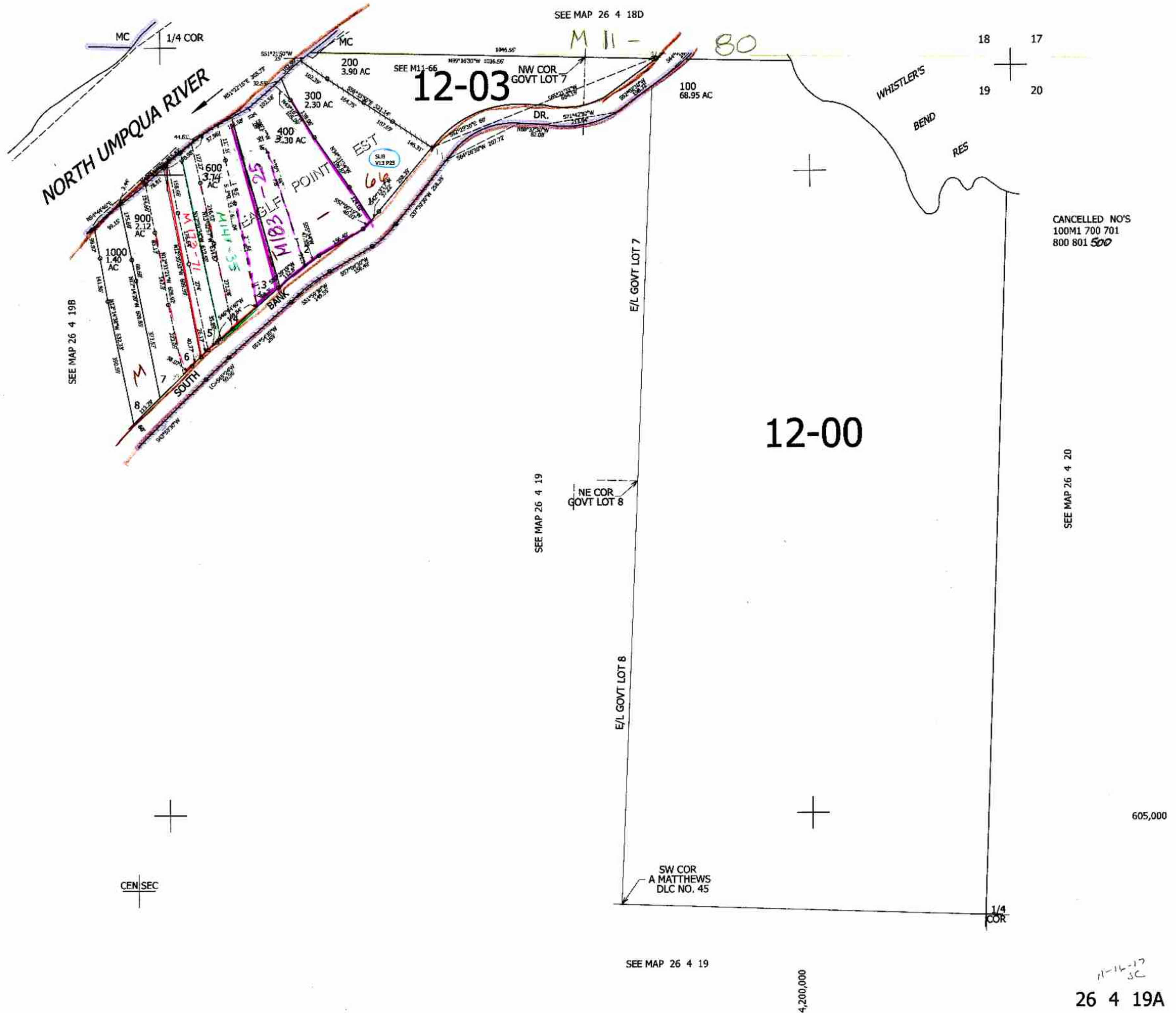


THIS MAP WAS PREPARED FOR  
ASSESSMENT PURPOSE ONLY.

NE1/4 SEC.19 T.26S. R.4W. W.M.  
DOUGLAS COUNTY  
1" = 200'

REVISED ON  
11-13-17

26 4 19A



CANCELLED NO'S  
100M1 700 701  
800 801 500

605,000

11-14-17  
SC  
26 4 19A