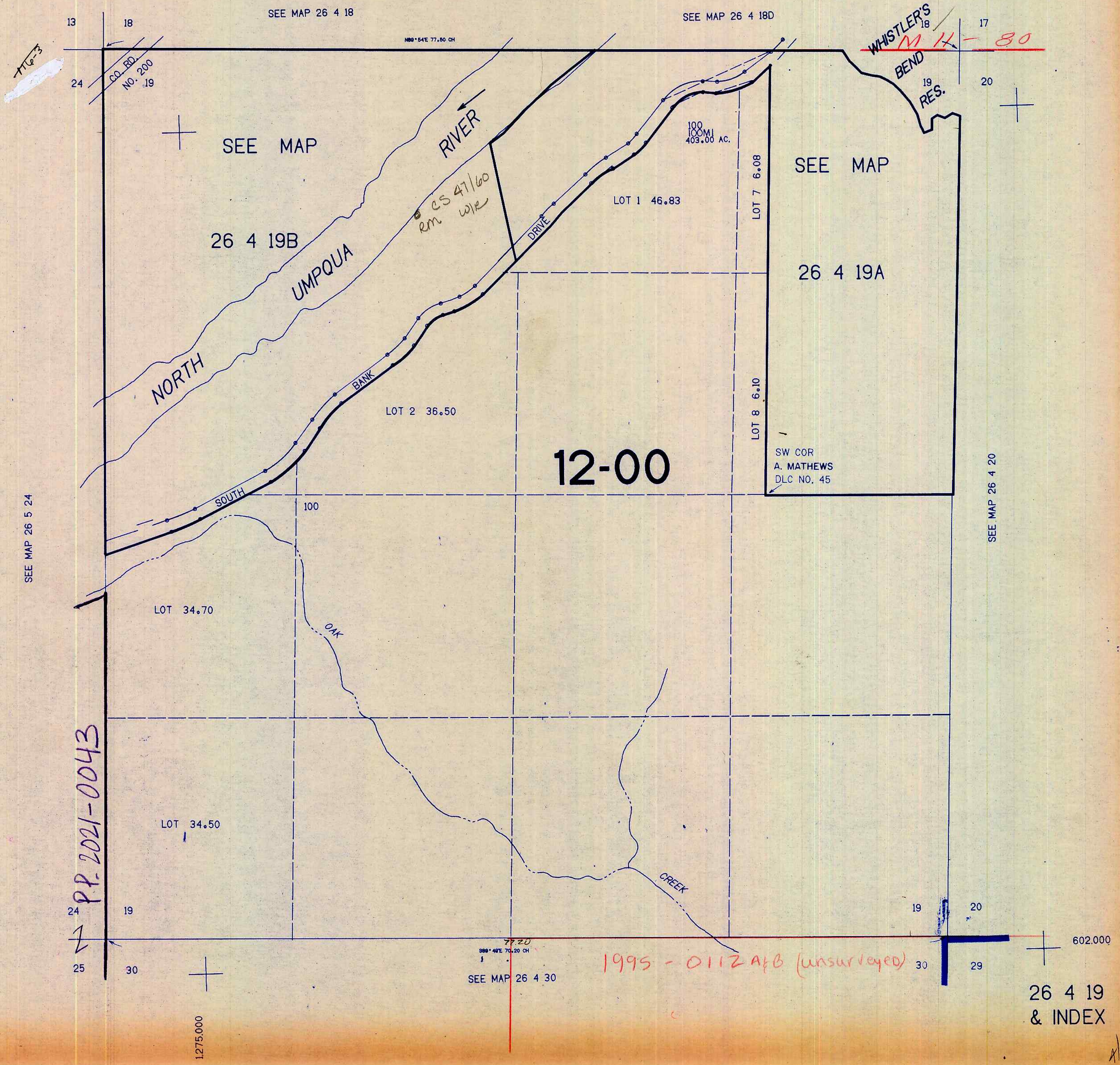


SECTION 19 T.26S. R.4W. W.M.  
DOUGLAS COUNTY

26 4 19  
& INDEX

THIS MAP WAS PREPARED FOR  
ASSESSMENT PURPOSE ONLY.

1"=400'



P.P. 2021-0043

1995 - 0112 A+B (unsurveyed)

26 4 19  
& INDEX

Handwritten initials/signature