

THIS MAP WAS PREPARED FOR ASSESSMENT PURPOSE ONLY.

NE1/4 SEC. 18 T.26S. R.4W. W.M.
DOUGLAS COUNTY

REVISED ON
11 - 24 - 93

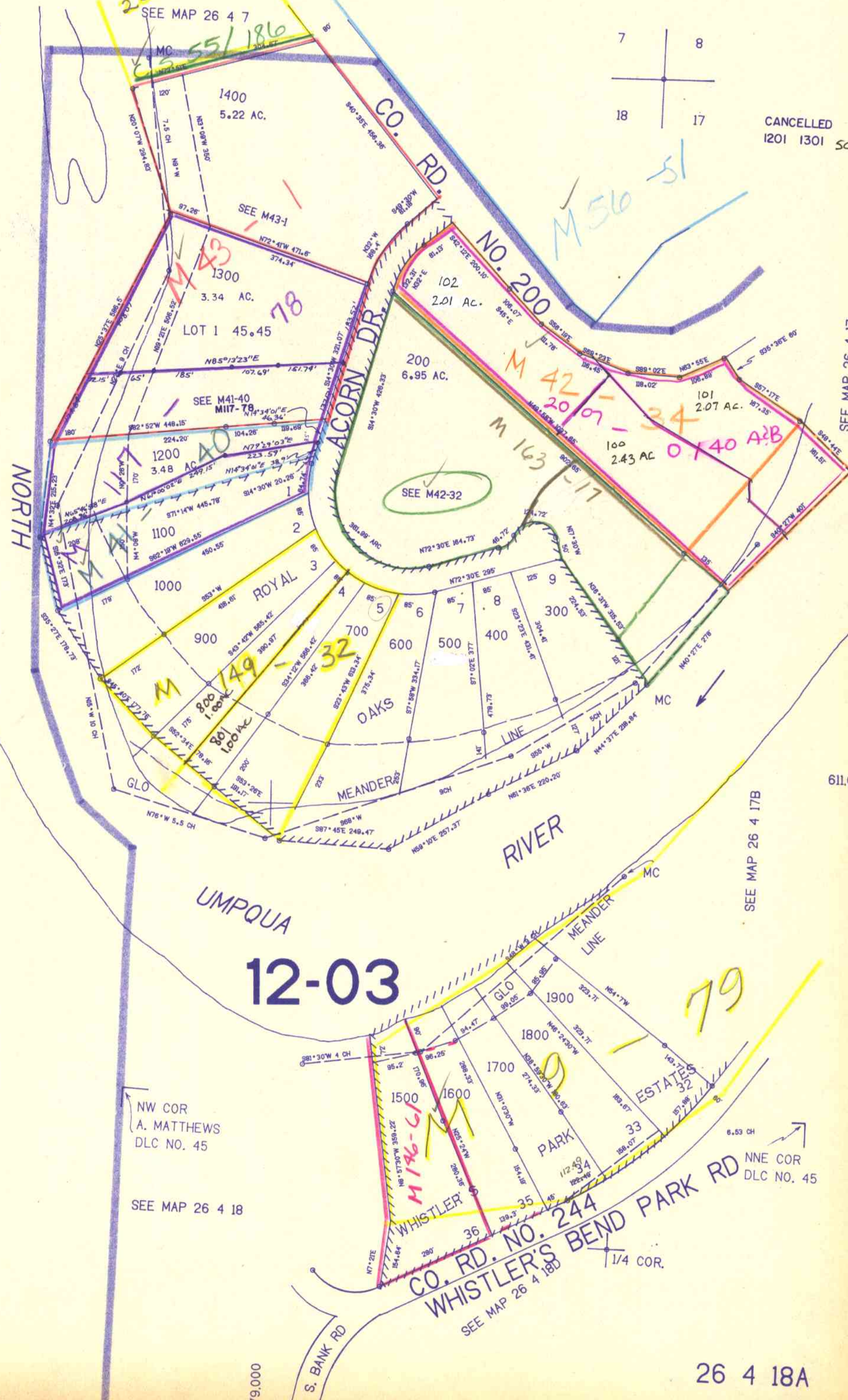
26 4 18A

1"=200'

1/4 COR.

7 8
18 17

CANCELLED NO'S
1201 1301 500A1



SEE MAP 26 4 17

611.000

SEE MAP 26 4 17B

12-03

NW COR
A. MATTHEWS
DLC NO. 45

SEE MAP 26 4 18

NNE COR
DLC NO. 45

APPROX
CEN. SEC.

26 4 18A

1.279.000