

THIS MAP WAS PREPARED FOR ASSESSMENT PURPOSE ONLY.

NW1/4 SEC.17 T.26S. R.4W. W.M.
DOUGLAS COUNTY
1" = 200'

REVISED ON
4-14-15

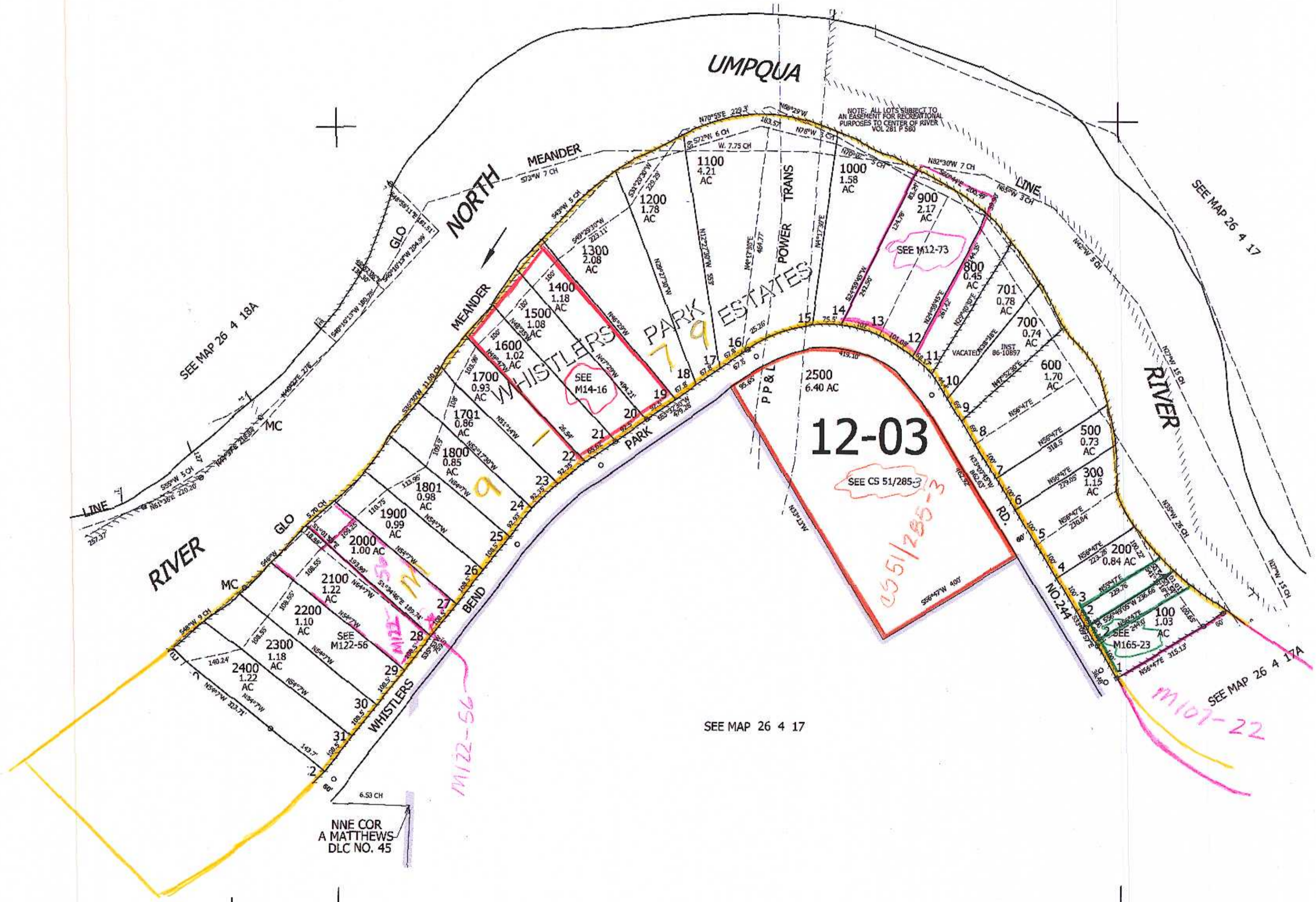
26 4 17B

7 8
18 17

1/4 COR

SEE MAP 26 4 17

CANCELLED NO'S
400 2500M1 102
101



SEE MAP 26 4 17

SEE MAP 26 4 17A

1/4 COR

CEN/SEC

4,203,000

610,000

26 4 17B