

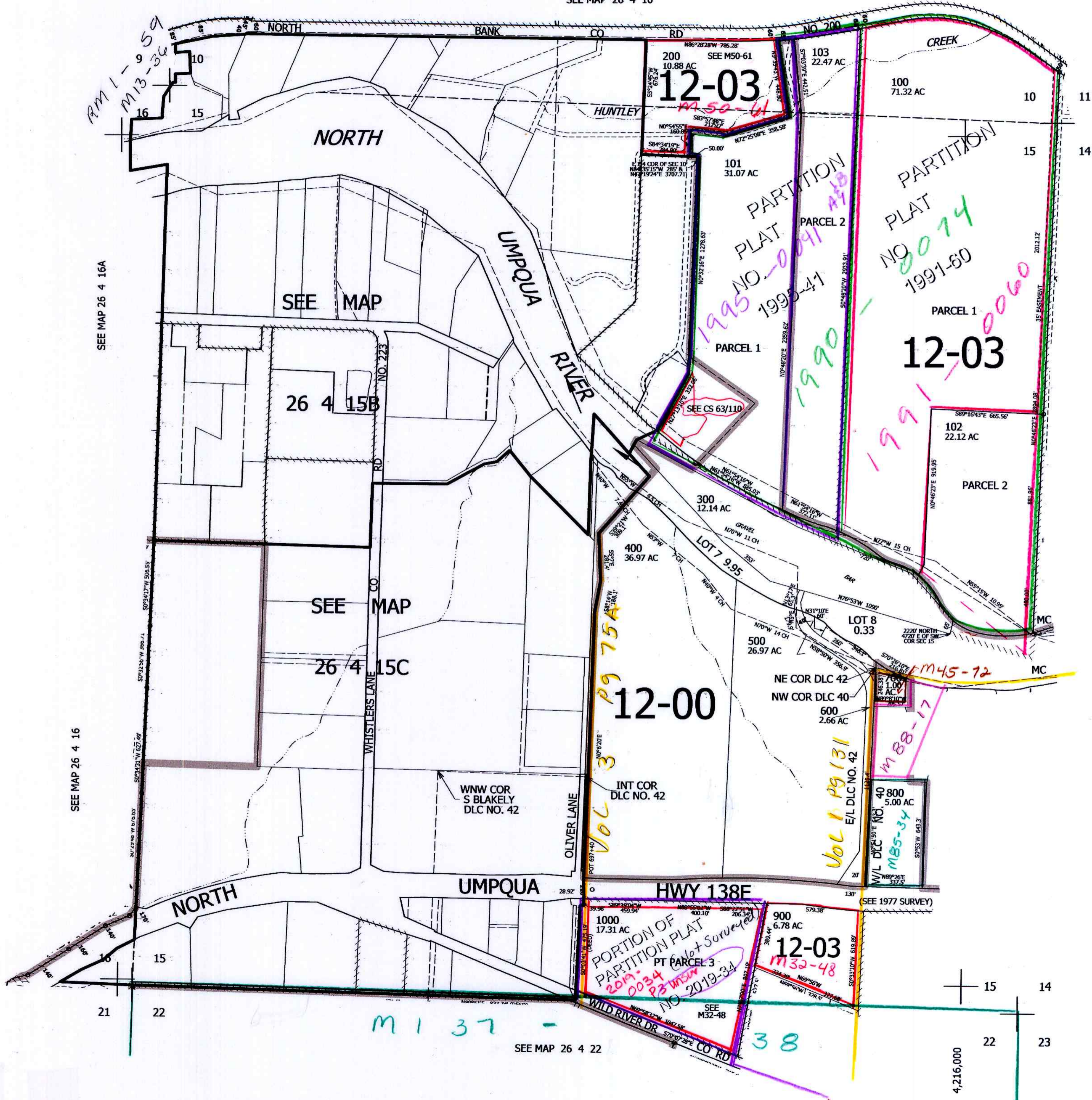
THIS MAP WAS PREPARED FOR ASSESSMENT PURPOSE ONLY.

SEC.15 T.26S. R.4W. W.M.
DOUGLAS COUNTY
1" = 400'

REVISED ON
12-3-19

26 4 15
& INDEX

SEE MAP 26 4 10



CANCELLED NO'S

SEE MAP 26 4 14

cm 6/1/17
JCV 607,000

26 4 15
& INDEX