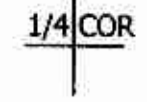
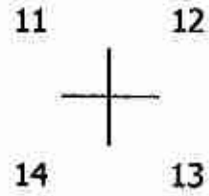


THIS MAP WAS PREPARED FOR
ASSESSMENT PURPOSE ONLY.

NW1/4 SEC.13 T.26S. R.4W. W.M.
DOUGLAS COUNTY
1" = 200'

REVISED ON
11-16-15

26 4 13B



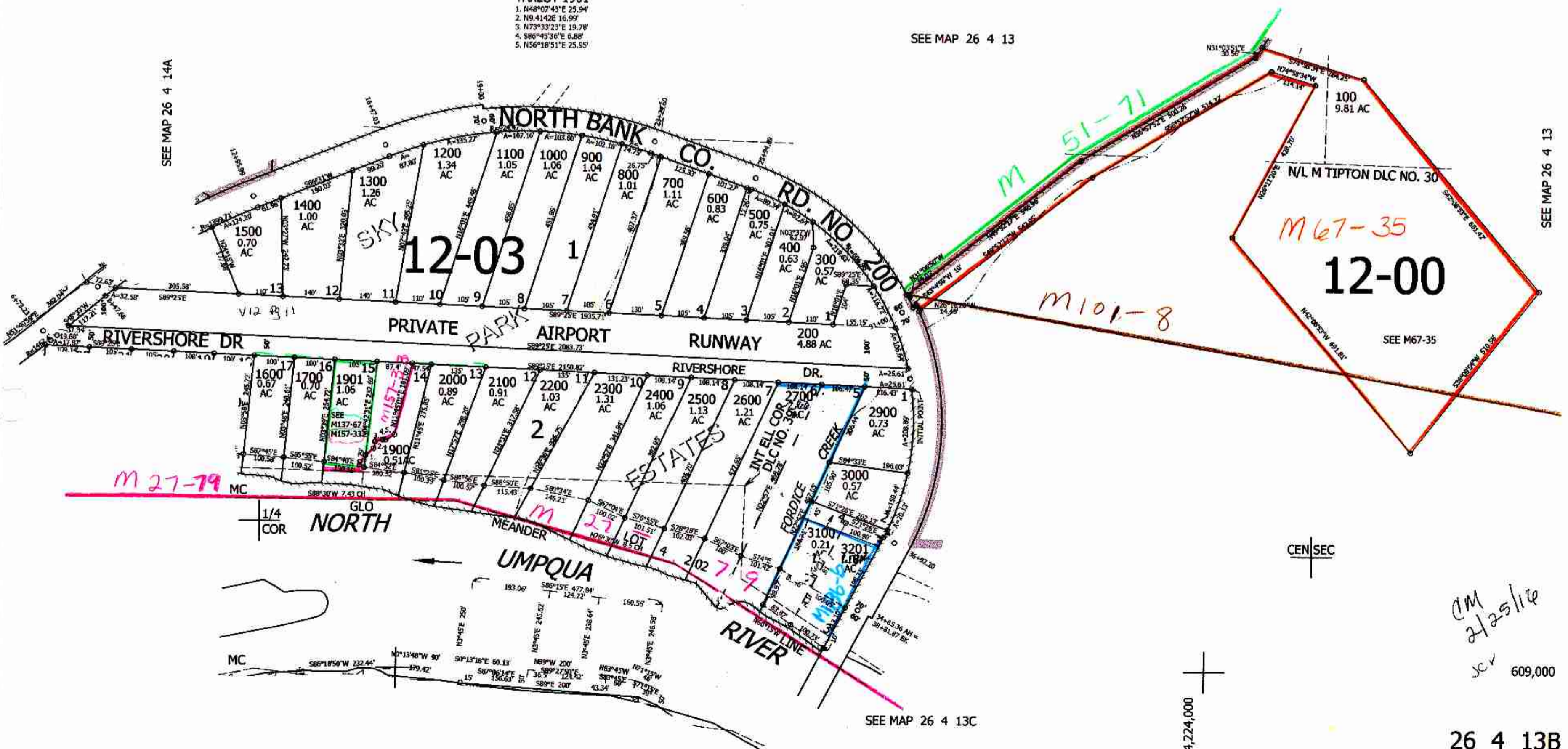
CANCELLED NO'S
3200 1800, 2800
3101

TAXLOT 1901
1. N48°07'43"E 25.94'
2. N9°41'42"E 16.99'
3. N73°33'23"E 19.78'
4. S86°45'36"E 6.88'
5. N56°18'51"E 25.95'

SEE MAP 26 4 13

SEE MAP 26 4 14A

SEE MAP 26 4 13



M 27-79

M 51-71

M 67-35

M 101-8

1/4 COR NORTH

CEN SEC

CM
2/25/16
609,000

SEE MAP 26 4 13C

4,224,000

26 4 13B