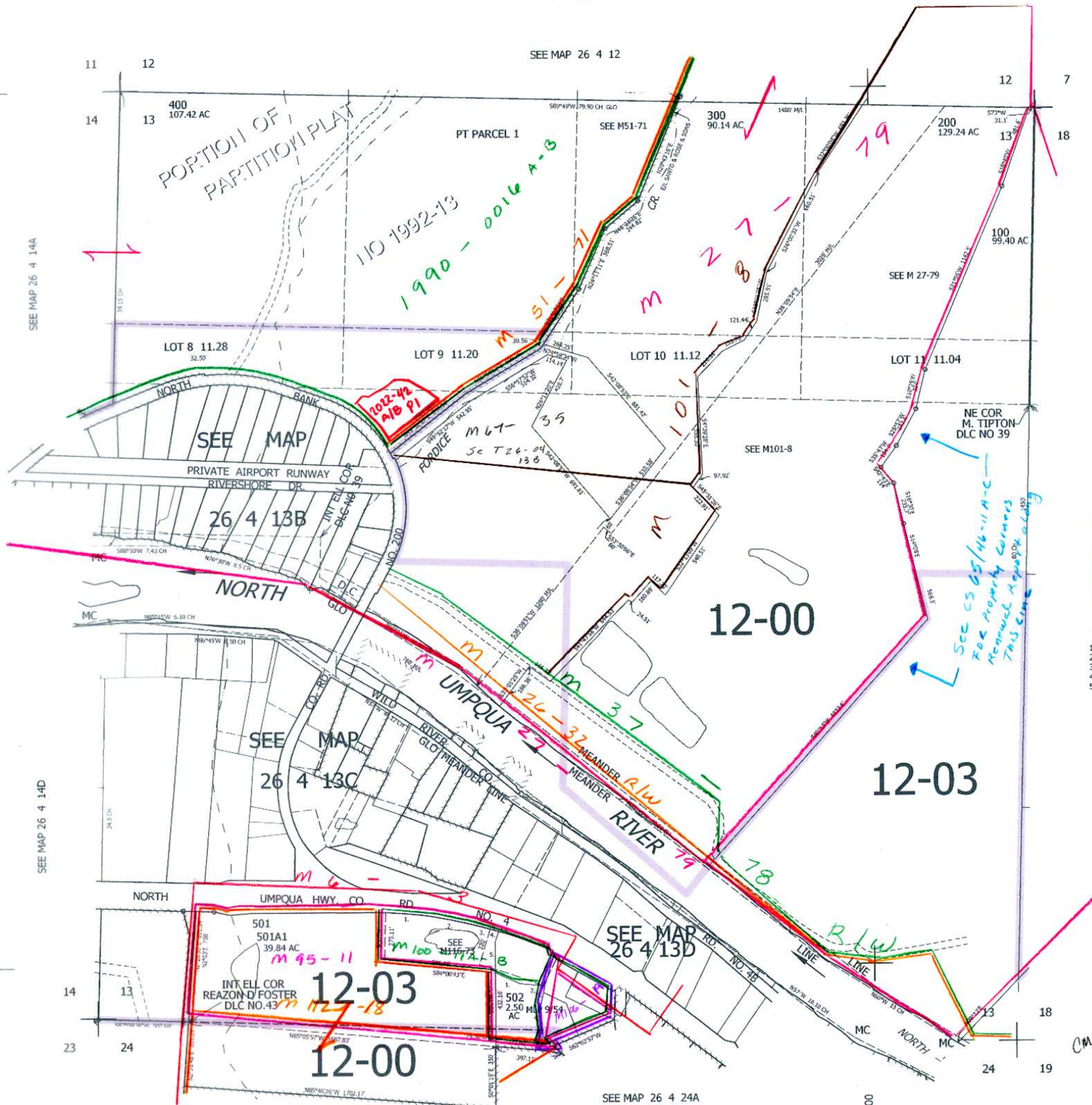


THIS MAP WAS PREPARED FOR ASSESSMENT PURPOSE ONLY.

SEC.13 T.26S. R.4W. W.M.
DOUGLAS COUNTY
1" = 400'

REVISED ON
2-15-12

26 4 13
& INDEX



CANCELLED NO'S
201 505 301
503 504 500

PARCEL 501

1. S85°59'24"E 201.76'
2. LC=S79°40'27"E 273.48'
3. S76°55'05"E 132.3'
4. S13°04'57"W 69.73'
5. SOUTH 173.93'

PARCEL 502

1. S62°52'17"E 158.23'
2. S85°07'15"E 138.62'
3. S10°10'47"W 142.25'
4. S8°51'52"E 156.61'
5. S7°30'00"W 90.13'

607,000

26 4 13
& INDEX

CM 2/10/11
SCW