

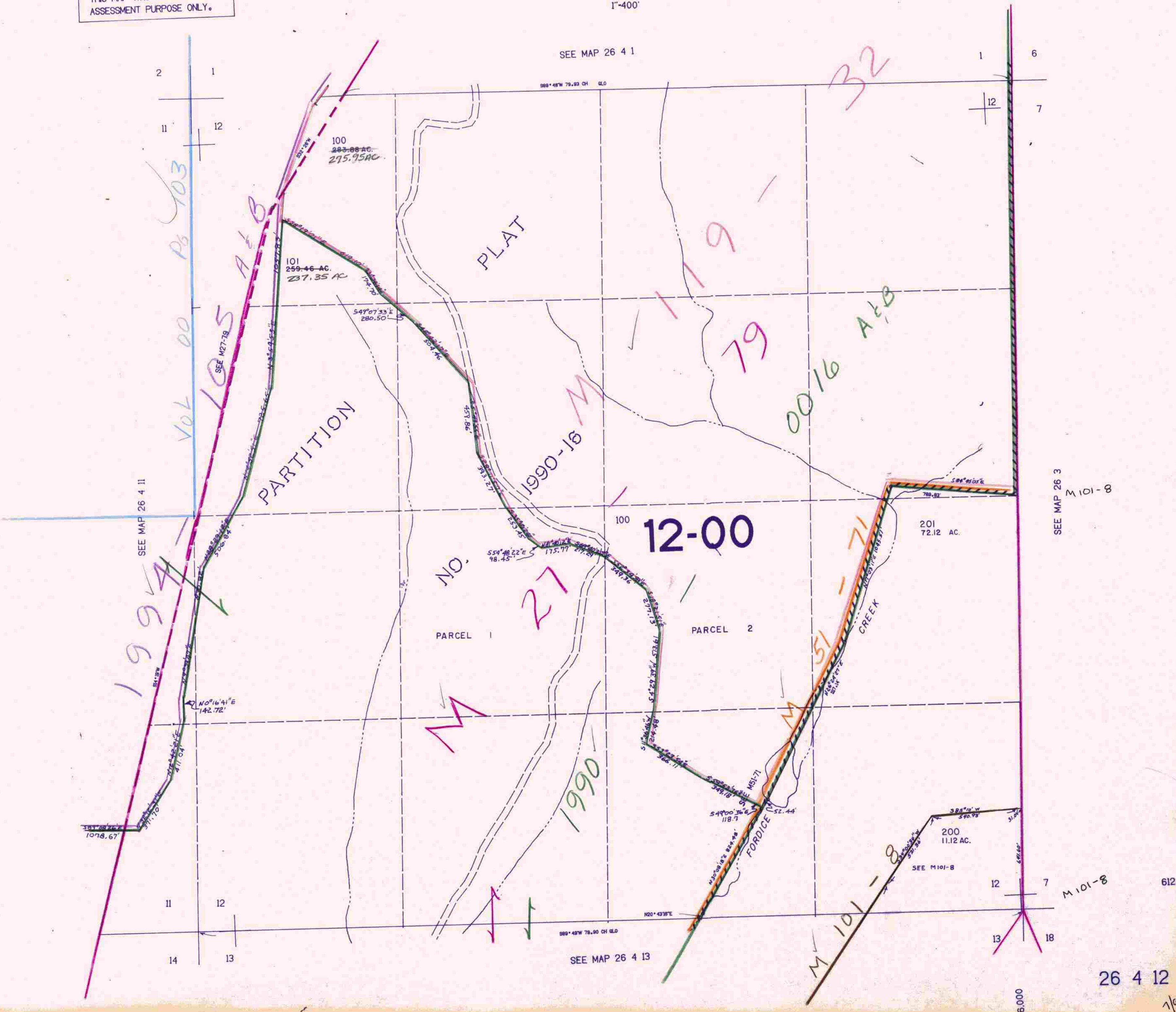
SECTION 12 T.26S. R.4W. W.M.  
DOUGLAS COUNTY

26 4 12

THIS MAP WAS PREPARED FOR  
ASSESSMENT PURPOSE ONLY.

1"=400'

SEE MAP 26 4 1



SEE MAP 26 4 11

SEE MAP 26 3  
M 101-8

SEE MAP 26 4 13

M 101-8

26 4 12

7/10/21  
DW