

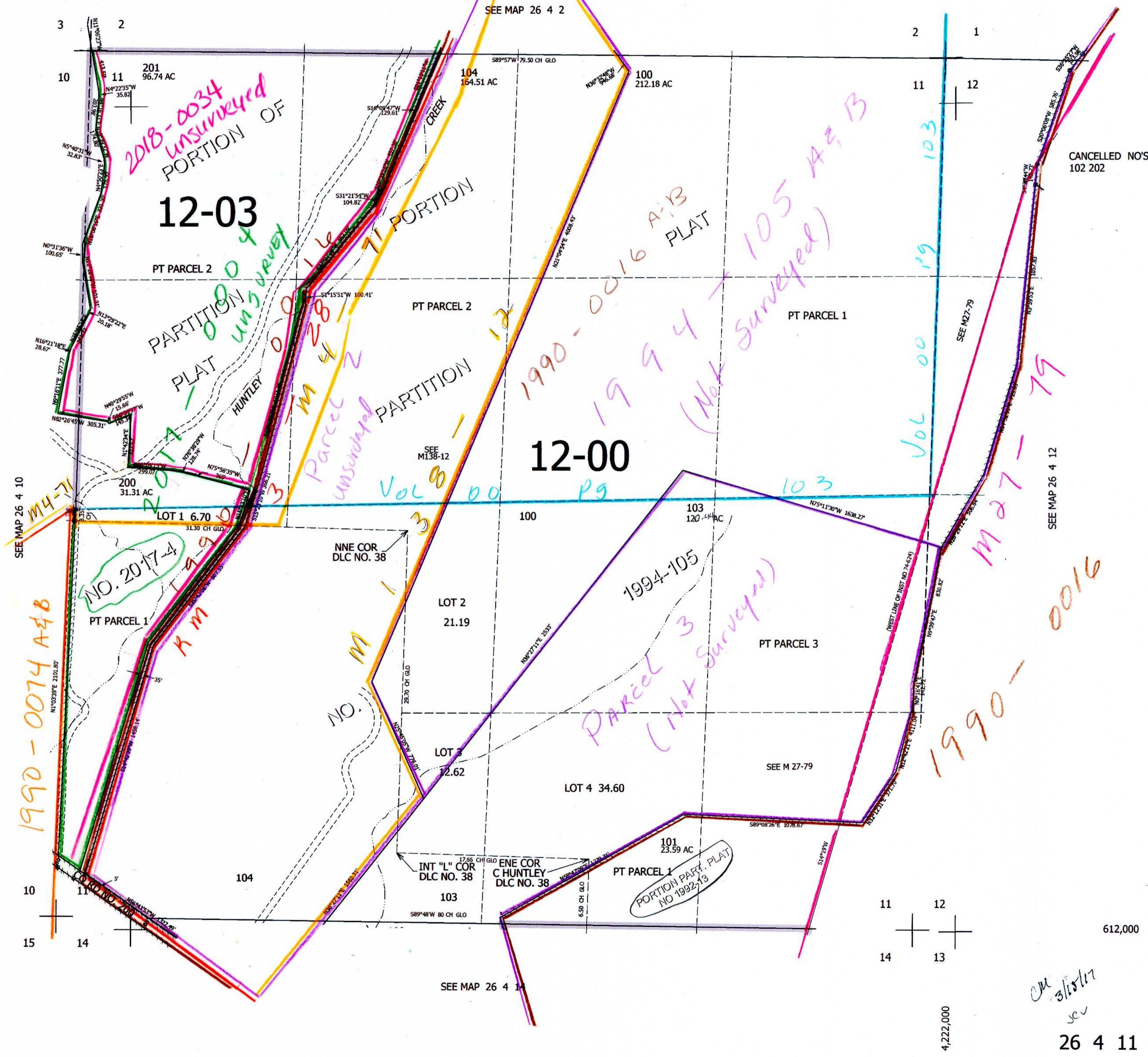
THIS MAP WAS PREPARED FOR ASSESSMENT PURPOSE ONLY.

SEC.11 T.26S. R.4W. W.M. DOUGLAS COUNTY

REVISED ON 3-15-17

26 4 11

1" = 400'



CANCELLED NO'S 102 202

612,000

4,222,000

on 3/15/17 sev

26 4 11