

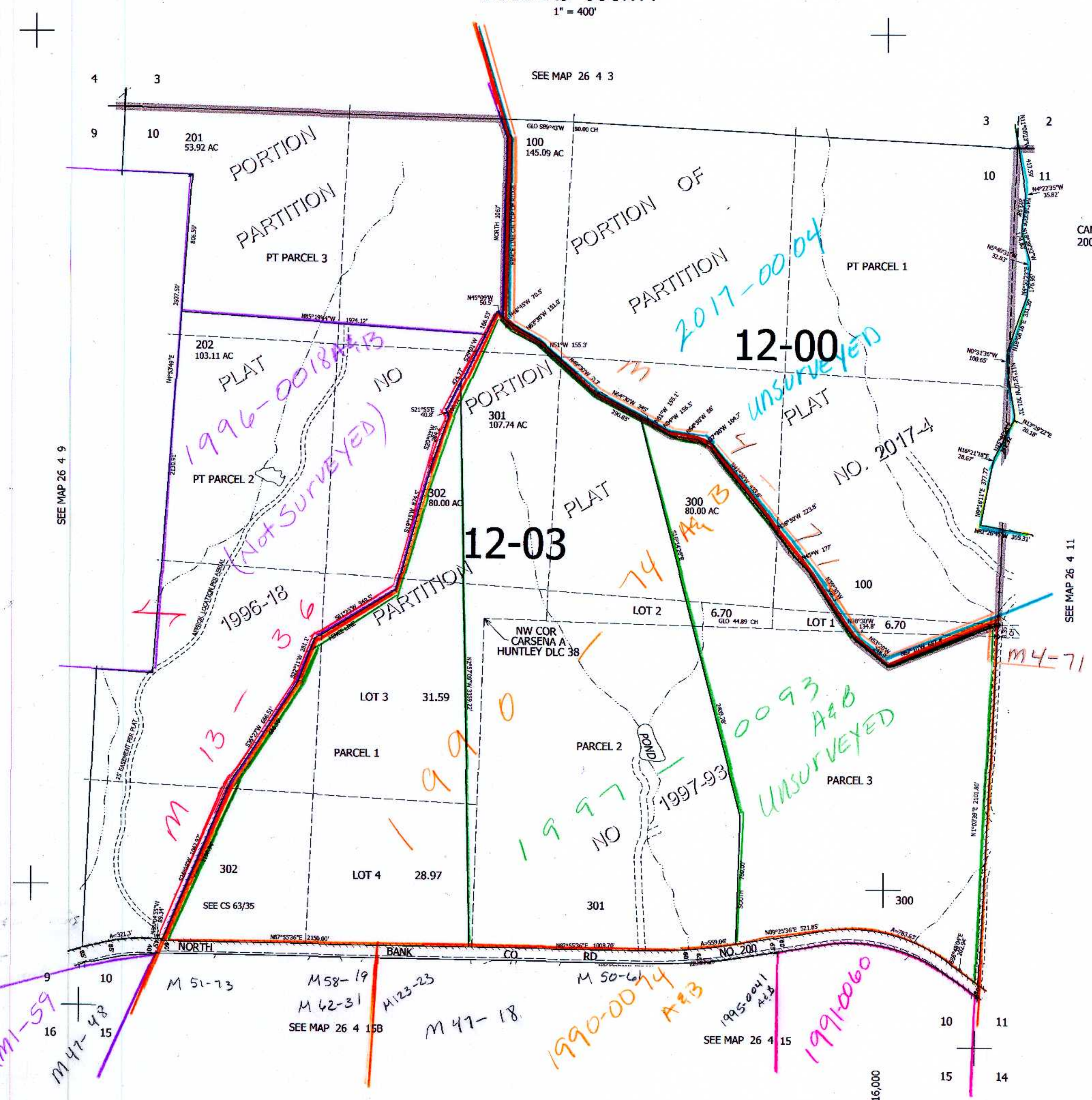
THIS MAP WAS PREPARED FOR ASSESSMENT PURPOSE ONLY.

SEC.10 T.26S. R.4W. W.M. DOUGLAS COUNTY

REVISED ON 5-23-17

26 4 10

1" = 400'



CANCELLED NO'S 200 101

SEE MAP 26 4 9

SEE MAP 26 4 11

613,000

4,216,000

Jim 5/23/17

scv

26 4 10