

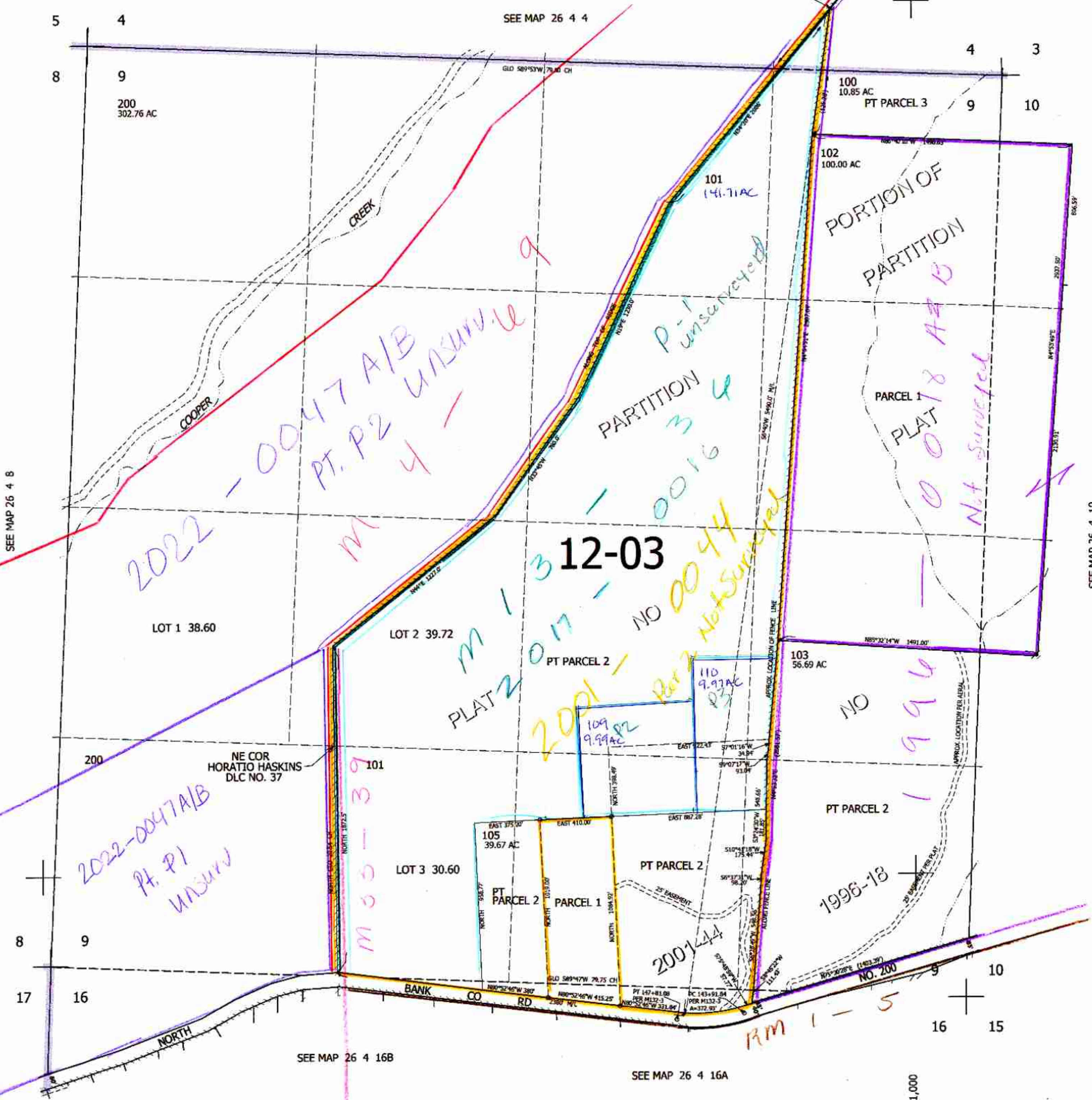
THIS MAP WAS PREPARED FOR ASSESSMENT PURPOSE ONLY.

SEC.9 T.26S. R.4W. W.M.
DOUGLAS COUNTY

1" = 400'

REVISED ON
5-18-17

26 4 9



SEE MAP 26 4 8

SEE MAP 26 4 4

CANCELLED NO'S
104 106 107
108

SEE MAP 26 4 10

613,000

SEE MAP 26 4 16B

SEE MAP 26 4 16A

4,211,000

26 4 9