

SECTION 7 T.26S. R.4W. W.M.
DOUGLAS COUNTY

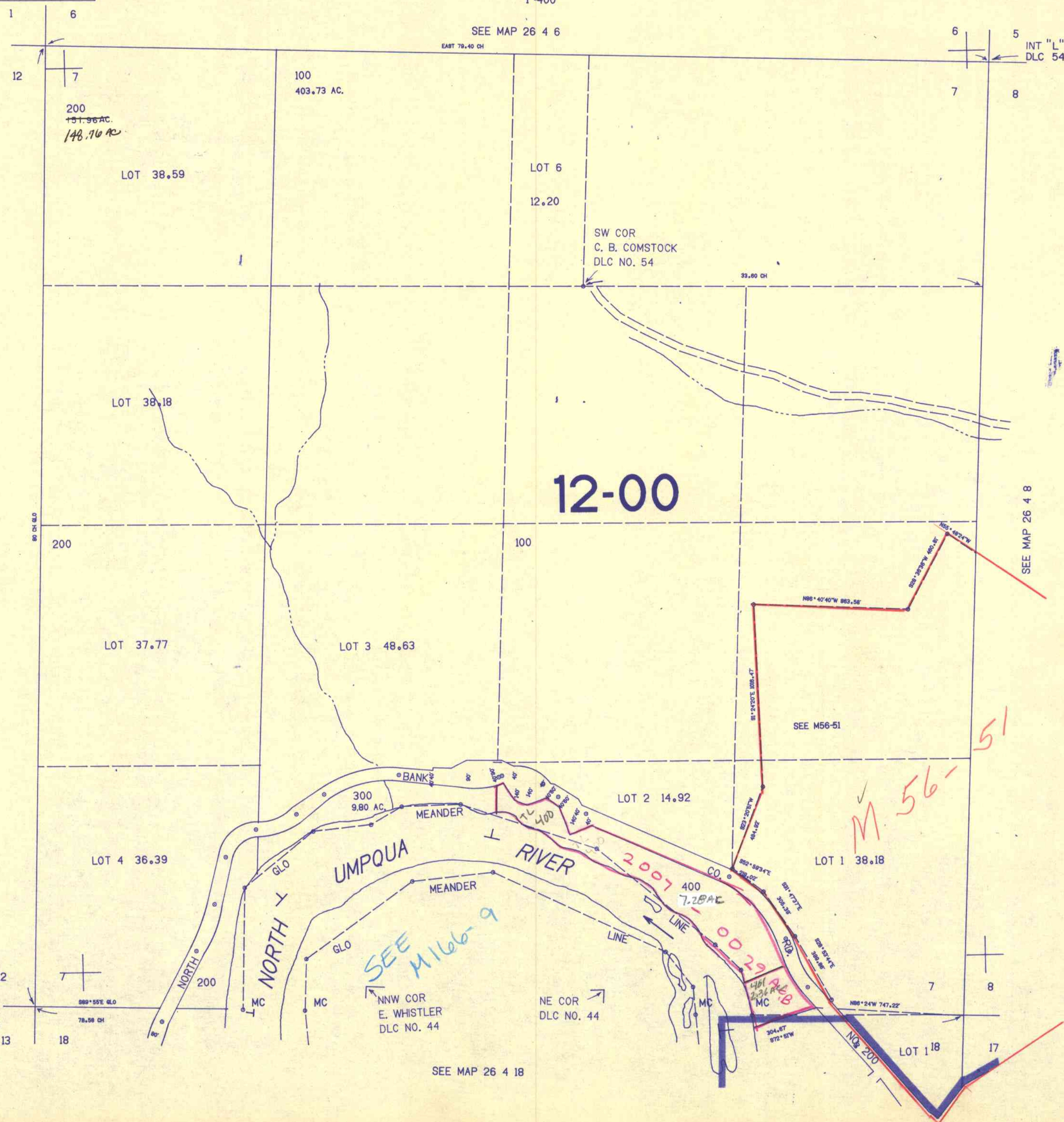
THIS MAP WAS PREPARED FOR
ASSESSMENT PURPOSE ONLY.

1"=400'

SEE MAP 26 4 6

EAST 79.40 CH

INT "L" COR
DLC 54



SEE MAP 26 5 12
M 101-9

SEE MAP 26 4 8

M 101-9

SEE MAP 26 4 18

1280.000

613.000

WJH