

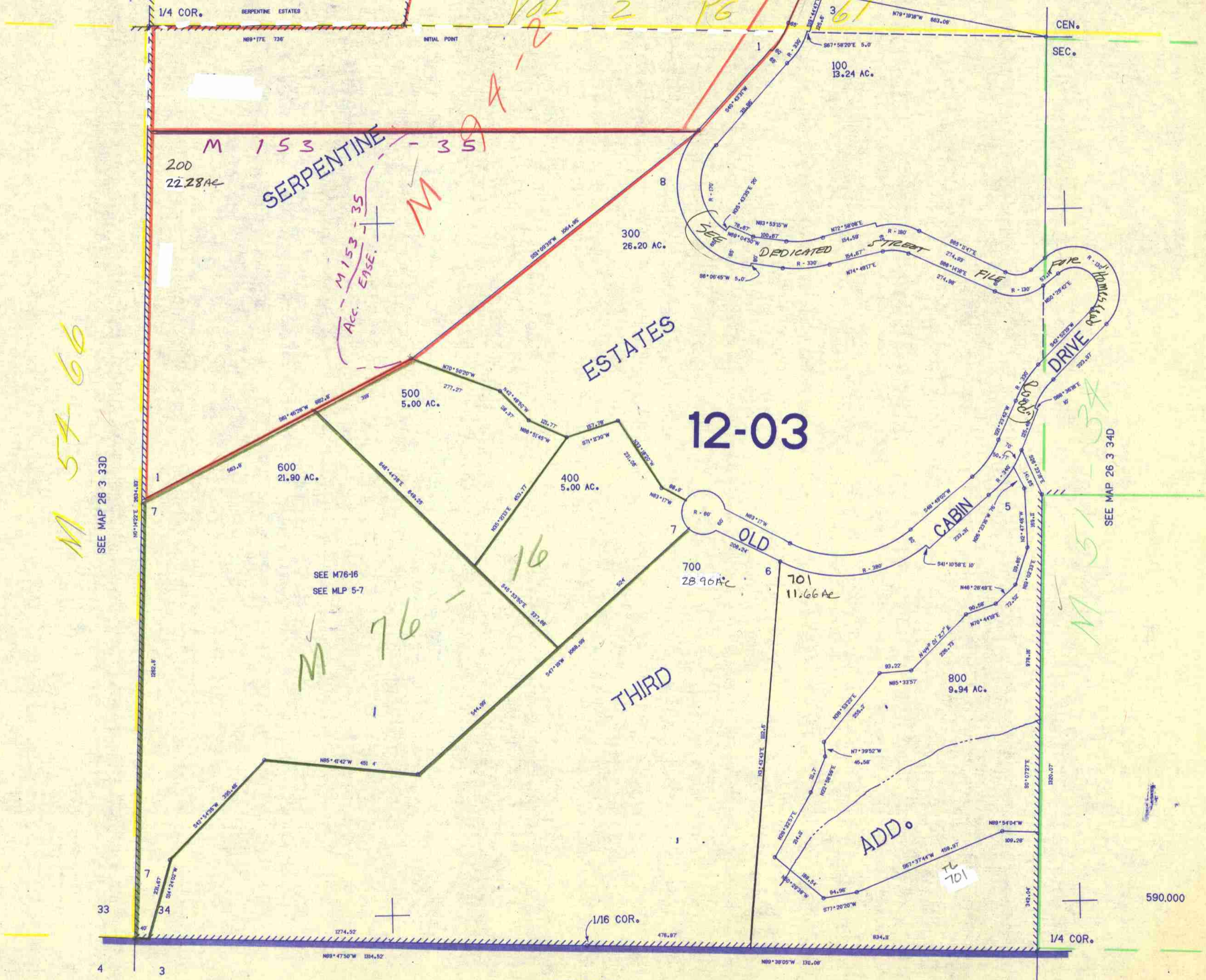
SW1/4 SEC. 34 T.26S. R.3W. W.M.
DOUGLAS COUNTY

26 3 34C

THIS MAP WAS PREPARED FOR
ASSESSMENT PURPOSE ONLY.

1"=200'

SEE MAP 26 3 34B



M 54-66

M 153
SERPENTINE - 35

M 153-35
ACC. EASE.

ESTATES

12-03

M 76

THIRD

ADD.

M 51-34

26 3 34C

11/87
2/8