

NE1/4 SEC. 34 T.26S. R.3W. W.M.
DOUGLAS COUNTY

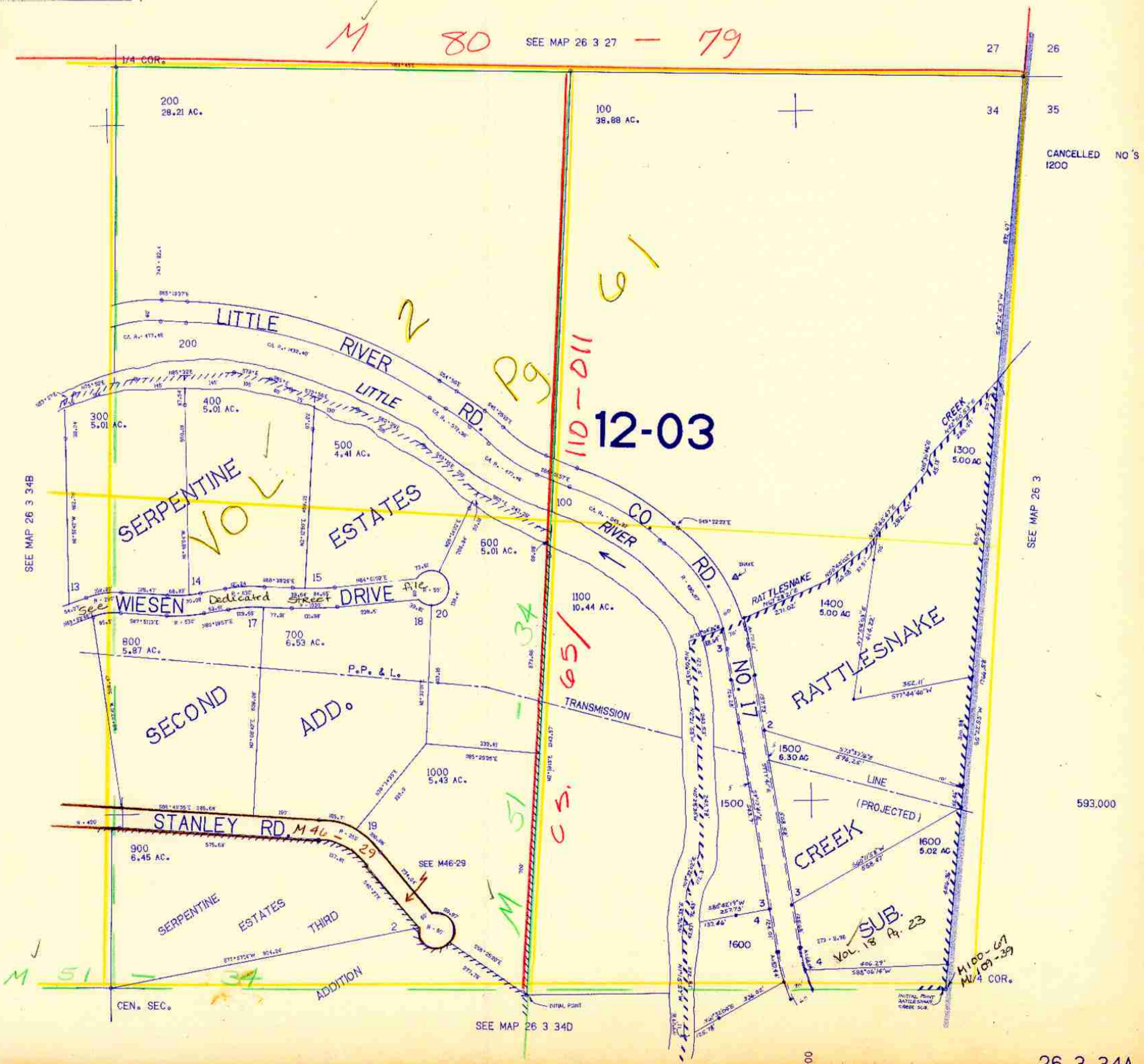
REVISED ON
10-20-94

26 3 34A

THIS MAP WAS PREPARED FOR
ASSESSMENT PURPOSE ONLY.

1"=200'

M 80 SEE MAP 26 3 27 - 79



26 3 34A