

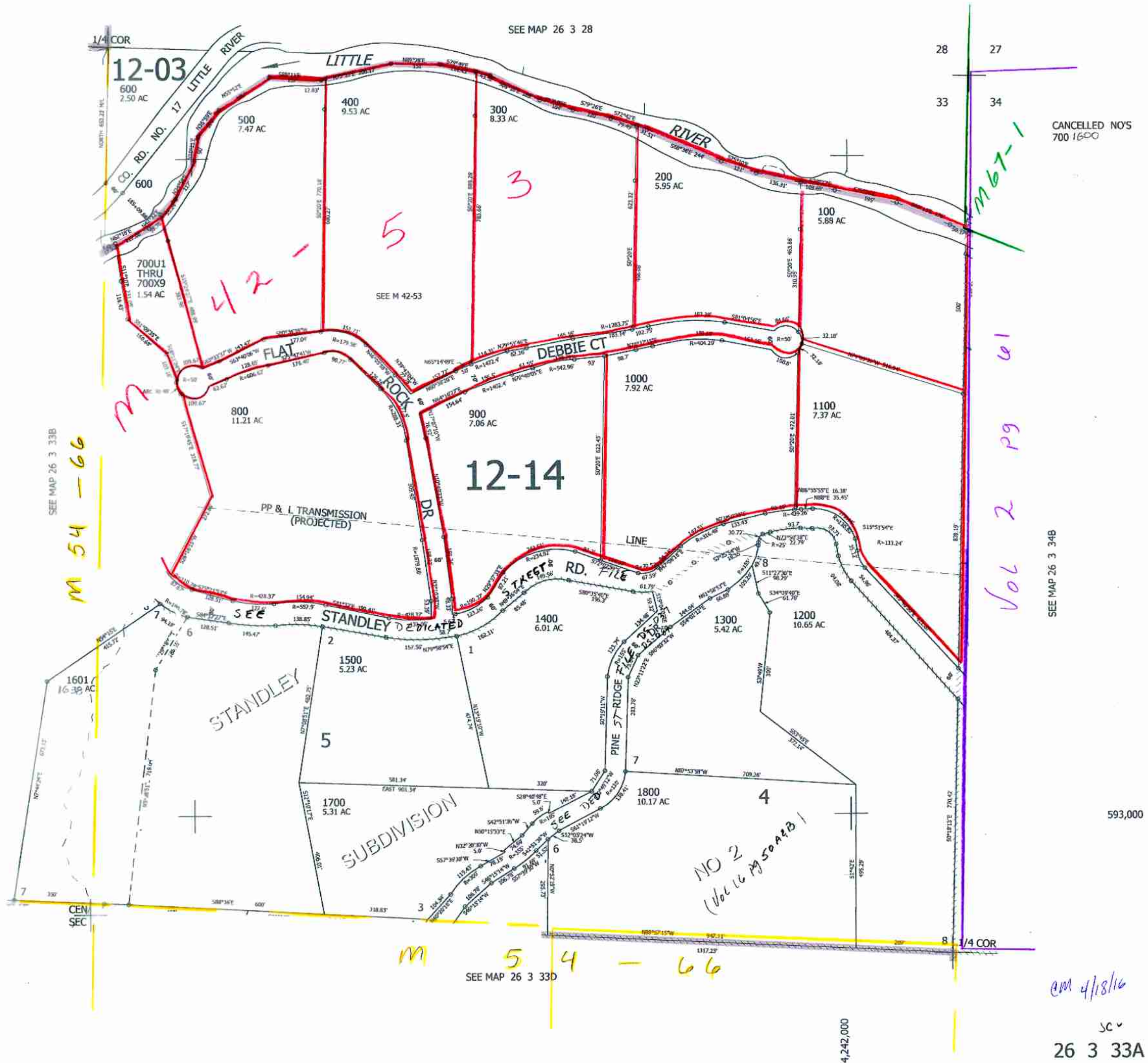
THIS MAP WAS PREPARED FOR ASSESSMENT PURPOSE ONLY.

NE1/4 SEC.33 T.26S. R.3W. W.M.  
DOUGLAS COUNTY  
1" = 200'

REVISED ON  
4-18-16

26 3 33A

SEE MAP 26 3 28



CANCELLED NO'S  
700 1600

SEE MAP 26 3 33B  
M 54 - 66

Vol 2 pg 61

SEE MAP 26 3 34B

SEE MAP 26 3 33D

M 54 - 66

AM 4/18/16

SCV  
26 3 33A

4,242,000