

THIS MAP WAS PREPARED FOR ASSESSMENT PURPOSE ONLY.

Upper Left:  
123°4'53"W 43°15'57"N  
4233822E 593429N ft

SE1/4 SEC.32 T.26S. R.03W. W.M.  
DOUGLAS COUNTY  
1" = 200'

CANCELLED NOS:  
800 601 602

CEN SEC

SEE MAP 2603W32

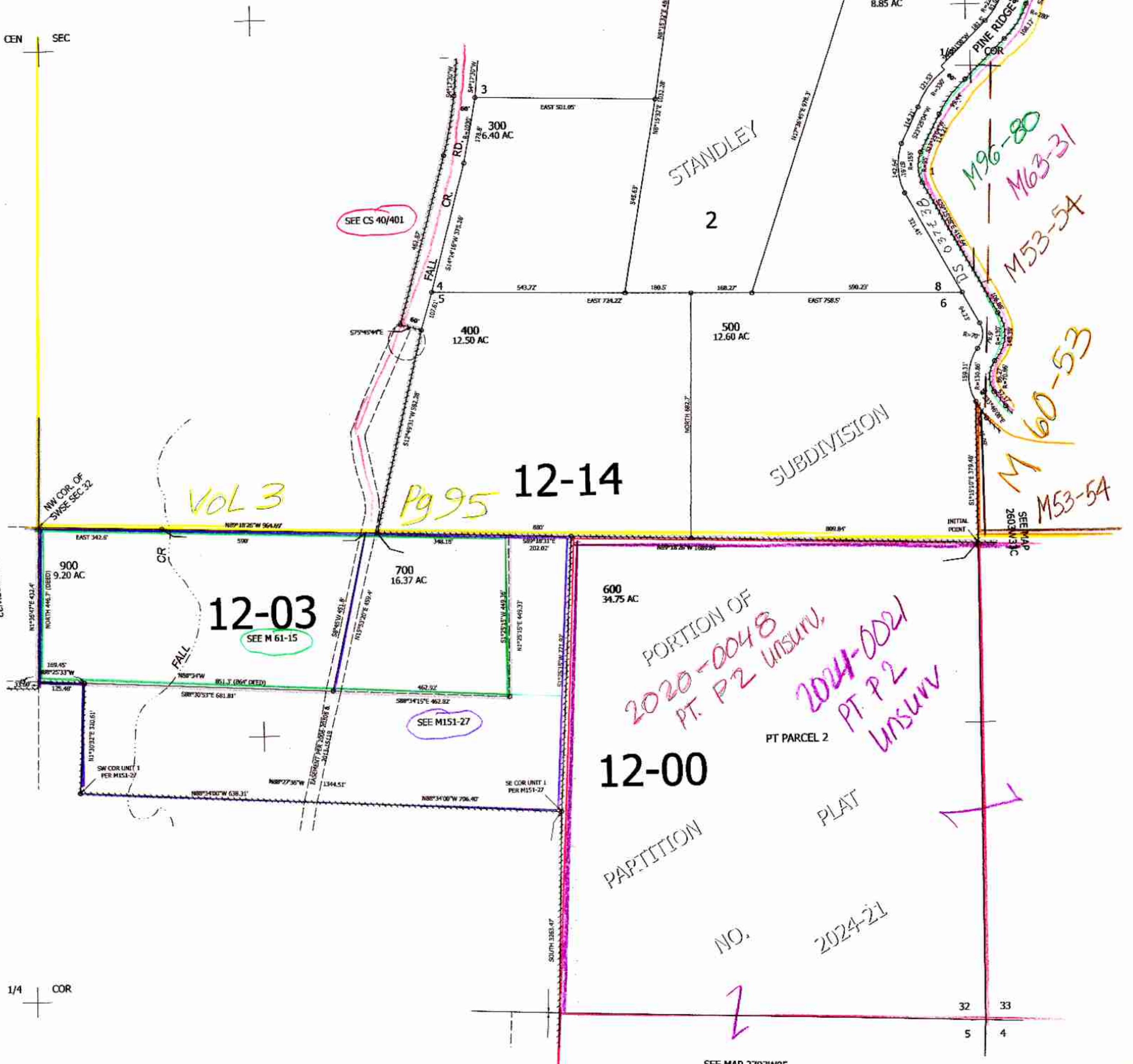
1/4 COR

SEE MAP 2603W32A

SEE MAP 2603W33B

SEE MAP 2603W33C

SEE MAP 2703W05



Lower Right:  
123°3'59"W 43°15'24"N  
4237747E 589952N ft

7/2024  
260332D  
scv