

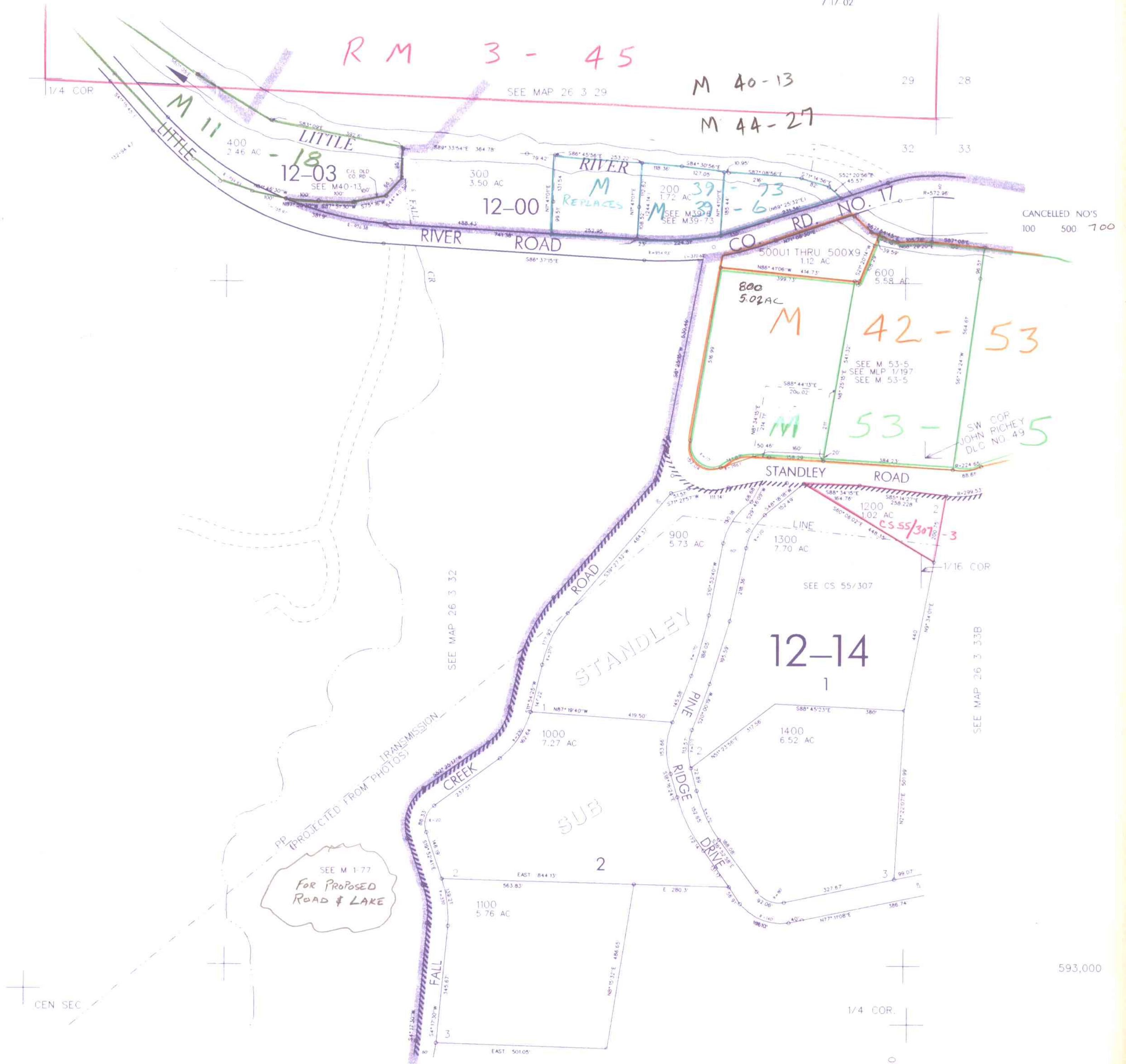
THIS MAP WAS PREPARED FOR ASSESSMENT PURPOSE ONLY

NE1/4 SEC. 32 T.26S. R. 3W. W.M. DOUGLAS COUNTY

26 3 32A

1" = 200'

REVISED ON 7/17/02



RM 3-45

M 40-13

M 44-27

M 42-53

M

M 53-5

M

12-14

SUB

SEE M 1-77 FOR PROPOSED ROAD & LAKE

CANCELED NO'S 100 500 700

SW COR JOHN RICHEY DLC NO. 49

593,000

SEE MAP 26 3 32D

4,237,000

26 3 32A

7/2002 SP