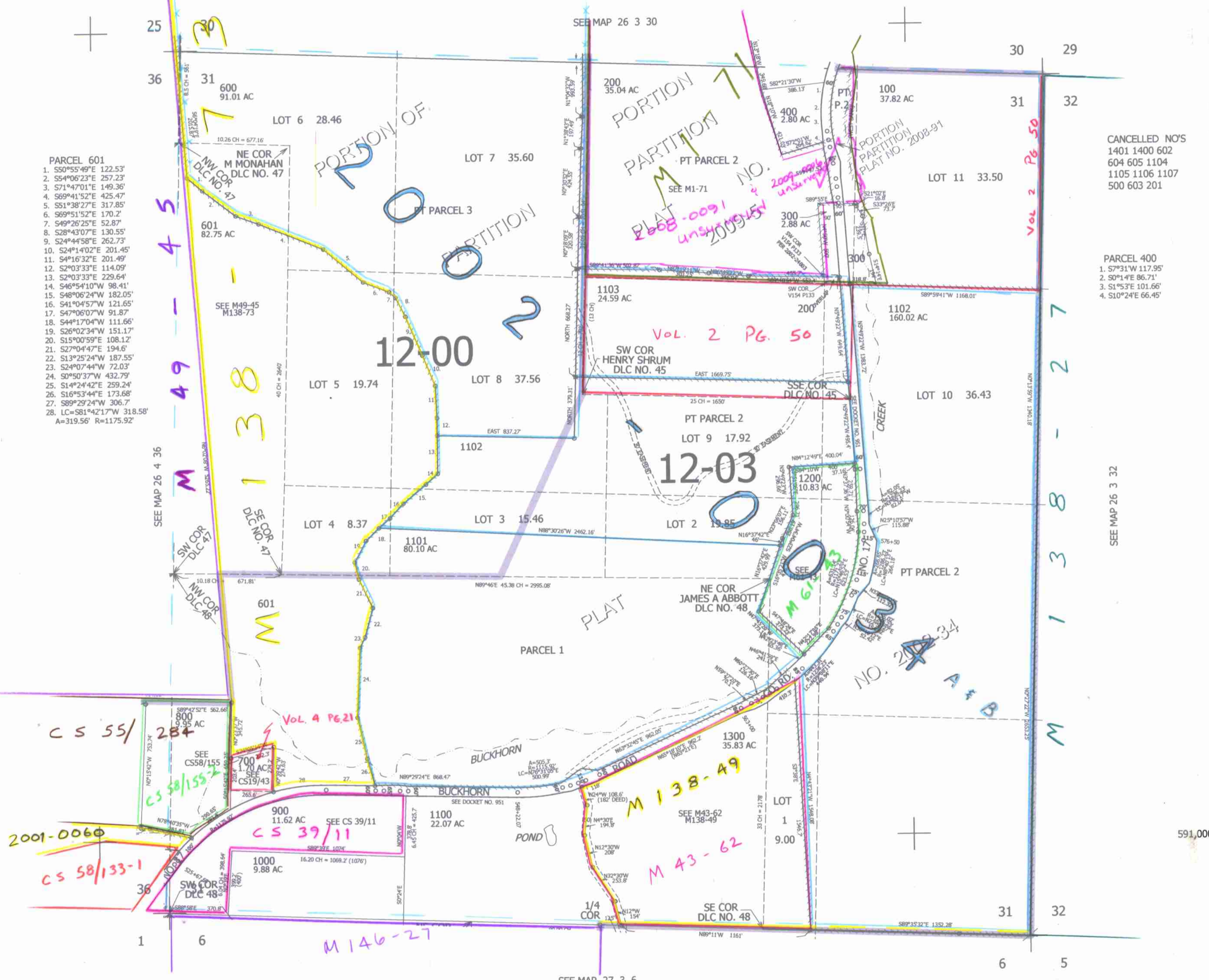


THIS MAP WAS PREPARED FOR ASSESSMENT PURPOSE ONLY.

SEC.31 T.26S. R.3W. W.M. DOUGLAS COUNTY  
1" = 400'

REVISED ON 4-16-10

26 3 31



- PARCEL 601
1. S50°55'49"E 122.53'
  2. S54°06'23"E 257.23'
  3. S71°47'01"E 149.36'
  4. S69°41'52"E 425.47'
  5. S51°38'27"E 317.85'
  6. S69°51'52"E 170.2'
  7. S49°26'25"E 52.87'
  8. S28°43'07"E 130.55'
  9. S24°44'58"E 262.73'
  10. S24°14'02"E 201.45'
  11. S4°16'32"E 201.49'
  12. S2°03'33"E 114.09'
  13. S2°03'33"E 229.64'
  14. S46°54'10"W 98.41'
  15. S48°06'24"W 182.05'
  16. S41°04'57"W 121.65'
  17. S47°06'07"W 91.87'
  18. S44°17'04"W 111.66'
  19. S26°02'34"W 151.17'
  20. S15°00'59"E 108.12'
  21. S27°04'47"E 194.6'
  22. S13°25'24"W 187.55'
  23. S24°07'44"W 72.03'
  24. S0°50'37"W 432.79'
  25. S14°24'42"E 259.24'
  26. S16°53'44"E 173.68'
  27. S89°29'24"W 306.7'
  28. LC=S81°42'17"W 318.58'
- A=319.56' R=1175.92'

CANCELLED NO'S  
1401 1400 602  
604 605 1104  
1105 1106 1107  
500 603 201

PARCEL 400  
1. S7°31'W 117.95'  
2. S0°14'E 86.71'  
3. S1°53'E 101.66'  
4. S10°24'E 66.45'

SEE MAP 26 3 32

591,000

4,231,000