

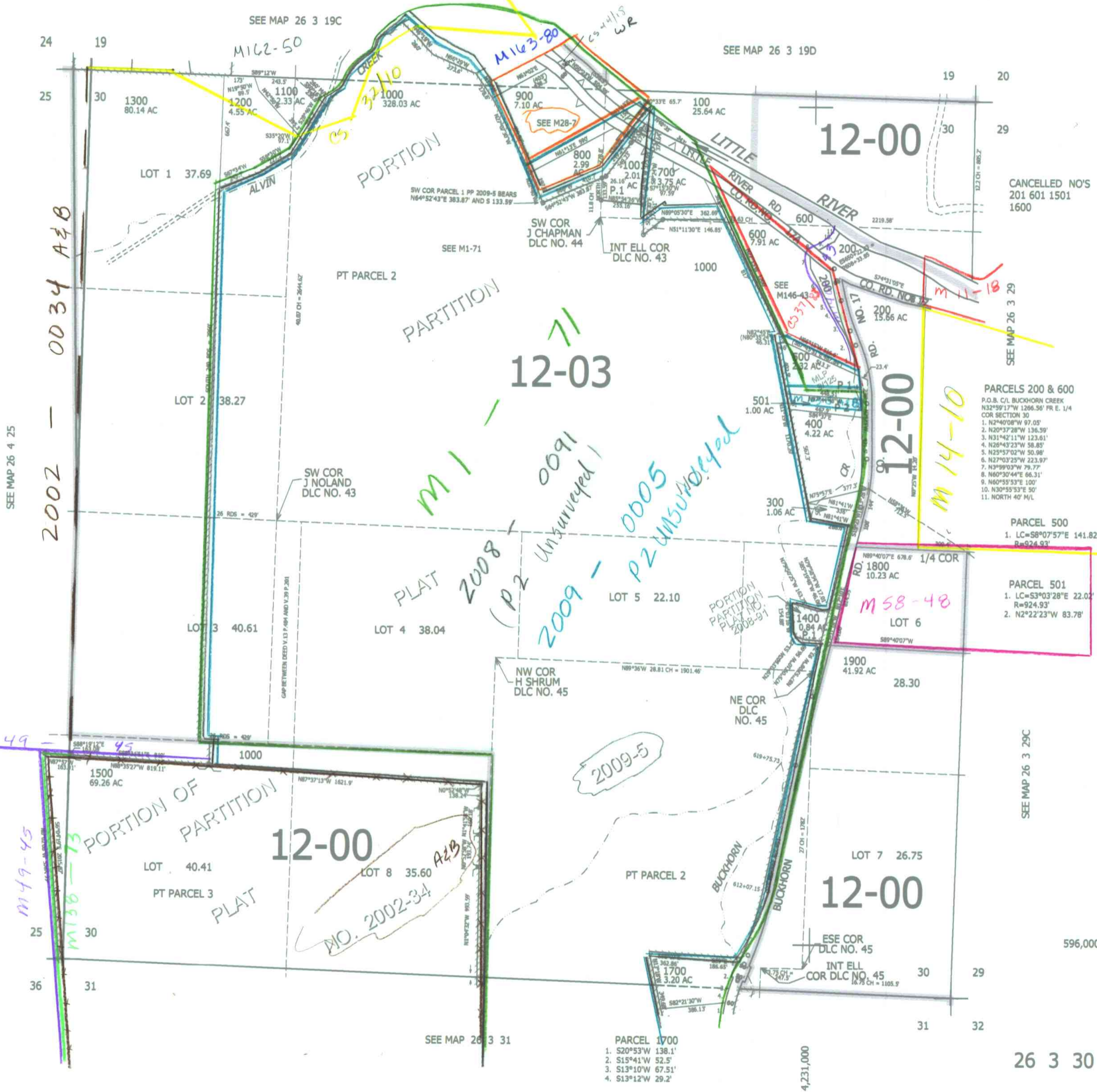
THIS MAP WAS PREPARED FOR ASSESSMENT PURPOSE ONLY.

SEC.30 T.26S. R.3W. W.M. DOUGLAS COUNTY

REVISED ON 2-26-14

26 3 30

1" = 400'



SEE MAP 26 4 25

2002 - 0034 A&B

PLAT 2008 (P2 Unsurveyed)

2009 - P2 Unsurveyed

2009-5

M49-45

PORTION OF PARTITION PLAT

NO. 2002-34 A&B

M14-10

- PARCELS 200 & 600
P.O.B. C/L BUCKHORN CREEK
N32°59'17"W 1266.56' PR E. 1/4
COR SECTION 30
- N2°40'08"W 97.05'
 - N20°37'28"W 136.59'
 - N31°42'11"W 123.61'
 - N26°43'23"W 58.85'
 - N25°57'02"W 50.98'
 - N27°03'25"W 223.97'
 - N3°59'03"W 79.77'
 - N60°30'44"E 66.31'
 - N60°53'33"E 100'
 - N30°53'33"E 50'
 - NORTH 40' M/L

- PARCEL 500
- LC=S8°07'57"E 141.82'
R=924.93'

- PARCEL 501
- LC=S3°03'28"E 22.02'
R=924.93'
 - N2°22'23"W 83.78'

- PARCEL 1700
- S20°53'W 138.1'
 - S15°41'W 52.5'
 - S13°10'W 67.51'
 - S13°12'W 29.2'

SEE MAP 26 3 31

SEE MAP 26 3 29C

596,000

4,231,000

26 3 30