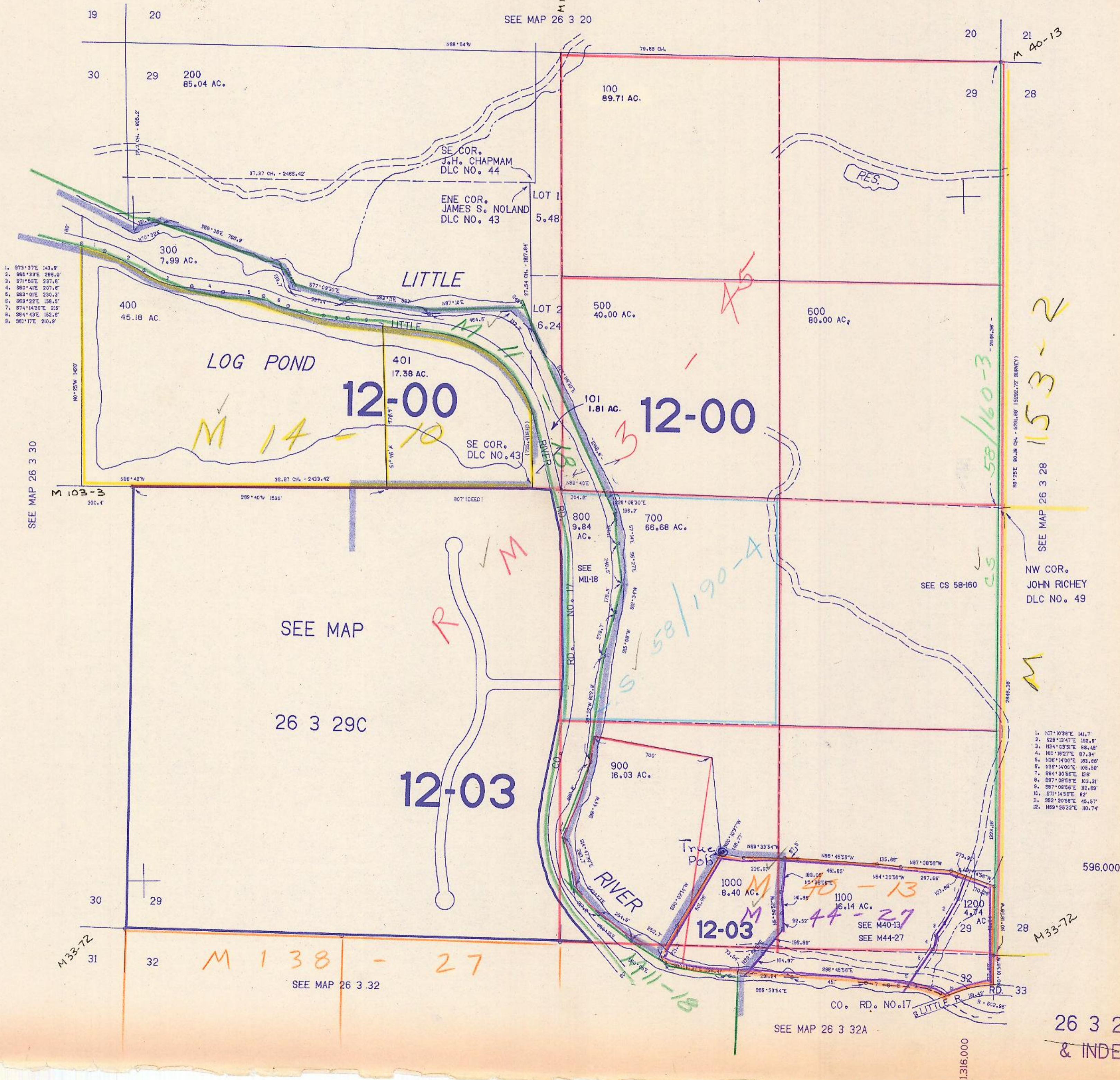


SECTION 29 T.26S. R.3W. W.M.
DOUGLAS COUNTY

THIS MAP WAS PREPARED FOR
ASSESSMENT PURPOSE ONLY.

1"=400'
M 100-7
SEE MAP 26 3 20



1. 873°37'E 143.8'
2. 966°23'E 269.9'
3. 871°55'E 237.6'
4. 282°41'E 207.6'
5. 283°01'E 230.3'
6. 353°22'E 156.1'
7. 874°14'30"E 225'
8. 364°43'E 152.2'
9. 981°17'E 210.9'

1. N7°10'38"E 141.7'
2. S28°13'47"E 162.6'
3. N34°03'51"E 88.45'
4. N10°16'27"E 87.34'
5. N36°14'00"E 183.88'
6. N35°14'00"E 105.58'
7. S84°20'56"E 125'
8. S87°08'55"E 103.21'
9. S87°08'56"E 102.80'
10. S71°14'58"E 62'
11. S52°20'58"E 45.57'
12. N89°25'52"E 101.74'

89°25'E 80.18 CH. - 5911.88' (15266.77' SURVEY)

NW COR.
JOHN RICHEY
DLC NO. 49

596.000

M 33-72