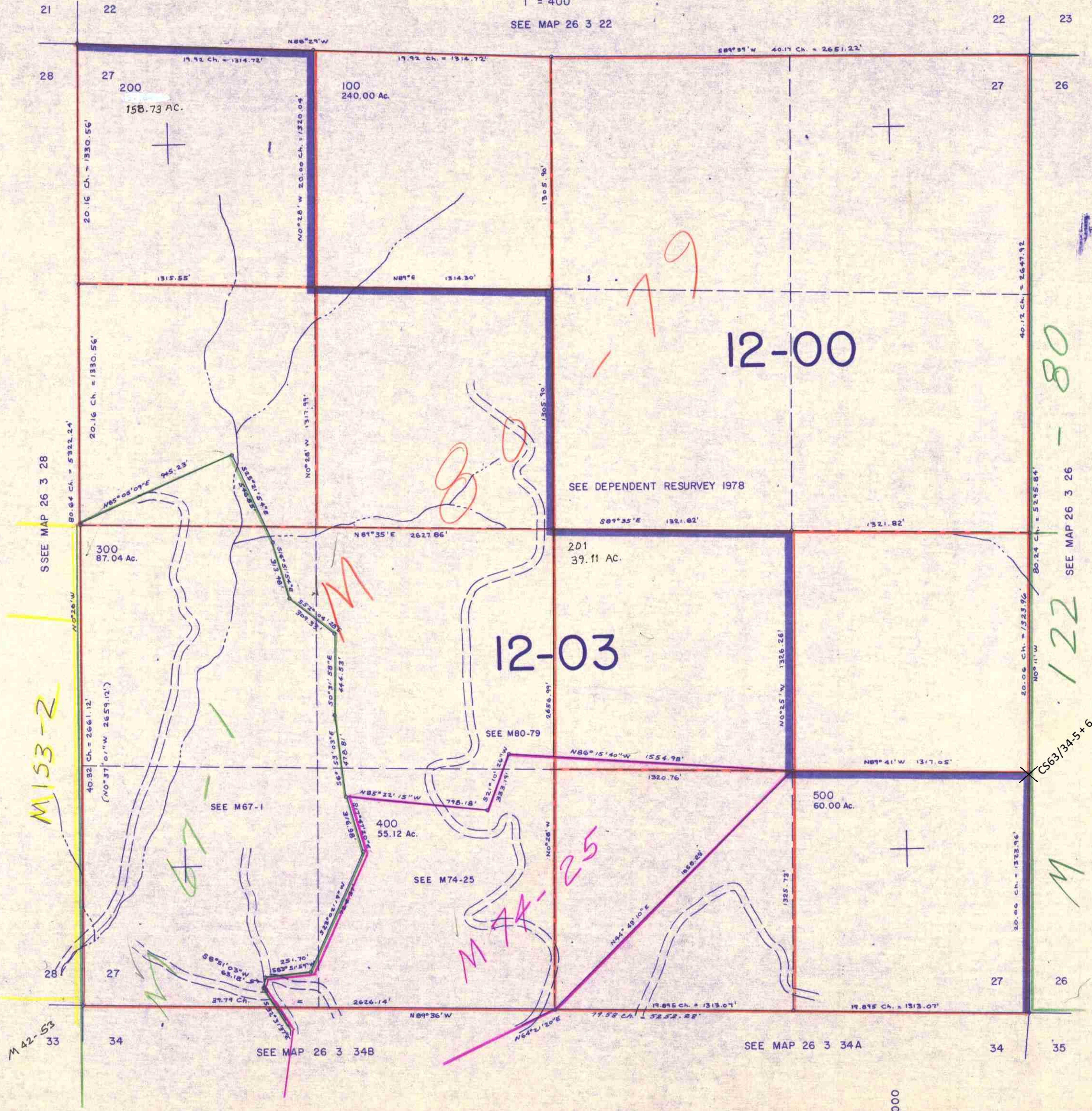


SECTION 27 T.26S. R.3W. W.M.
DOUGLAS COUNTY

1" = 400'
SEE MAP 26 3 22

THIS MAP WAS PREPARED FOR
ASSESSMENT PURPOSE ONLY.



MIS3-2

M42-53

MAX-25

12-00

12-03

122

M

CS63/345+6

SEE DEPENDENT RESURVEY 1978

SEE M80-79

SEE M67-1

SEE M74-25

SEE MAP 26 3 34B

SEE MAP 26 3 34A

SEE MAP 26 3 26

596,000

1,326,000

11/84