

NW1/4 SEC.21 T.26S. R.3W. W.M.
DOUGLAS COUNTY

REVISED ON
4-9-91

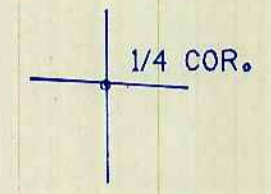
26 3 21B

THIS MAP WAS PREPARED FOR
ASSESSMENT PURPOSE ONLY.

1"=200'

VOL 3 PG 282

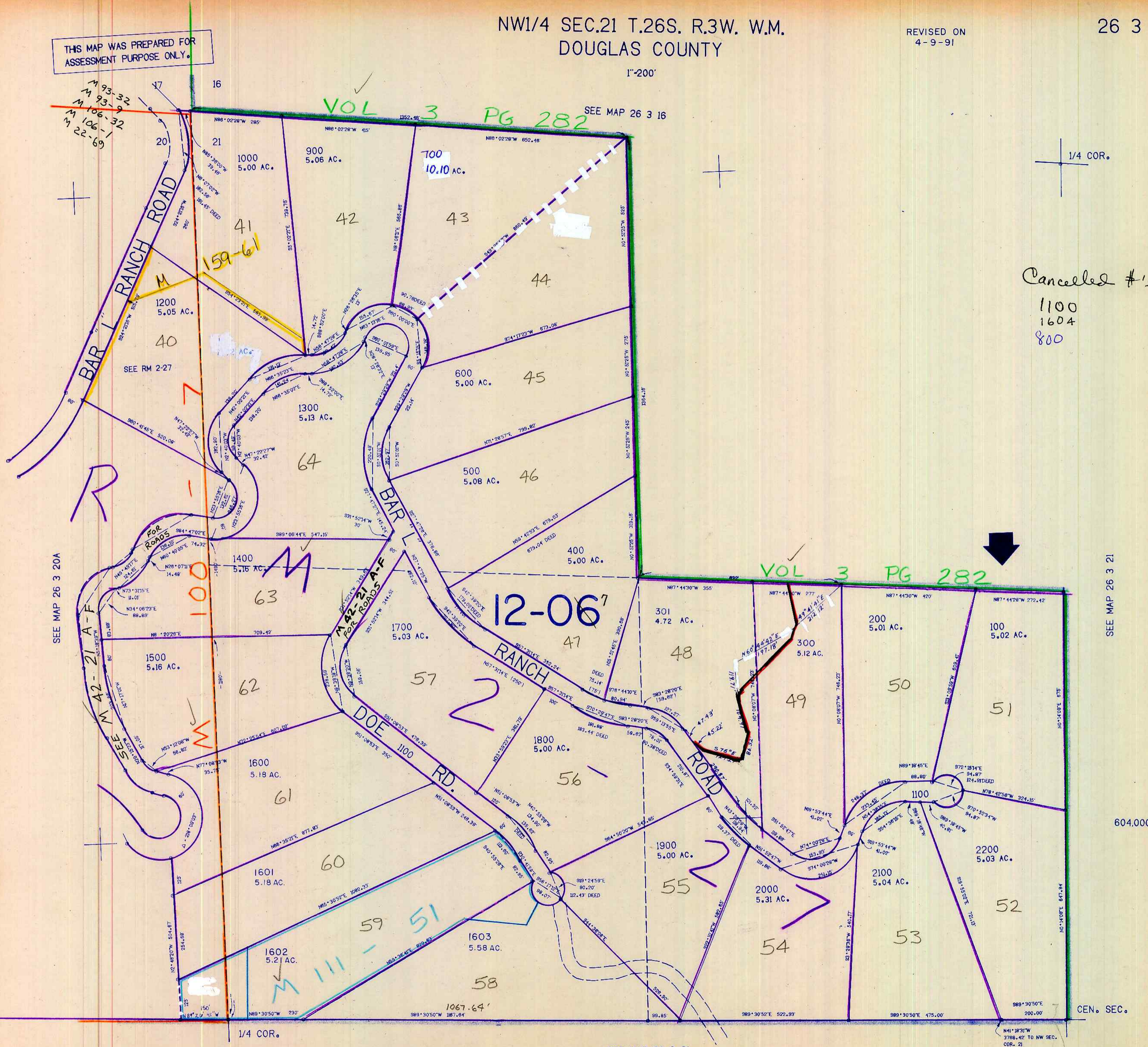
SEE MAP 26 3 16



Cancelled #'s
1100
1604
800

VOL 3 PG 282

SEE MAP 26 3 21



SEE MAP 26 3 20A

604,000

CEN. SEC.

SEE MAP 26 3 21

1,318,000

26 3 21B

5-91 JP