

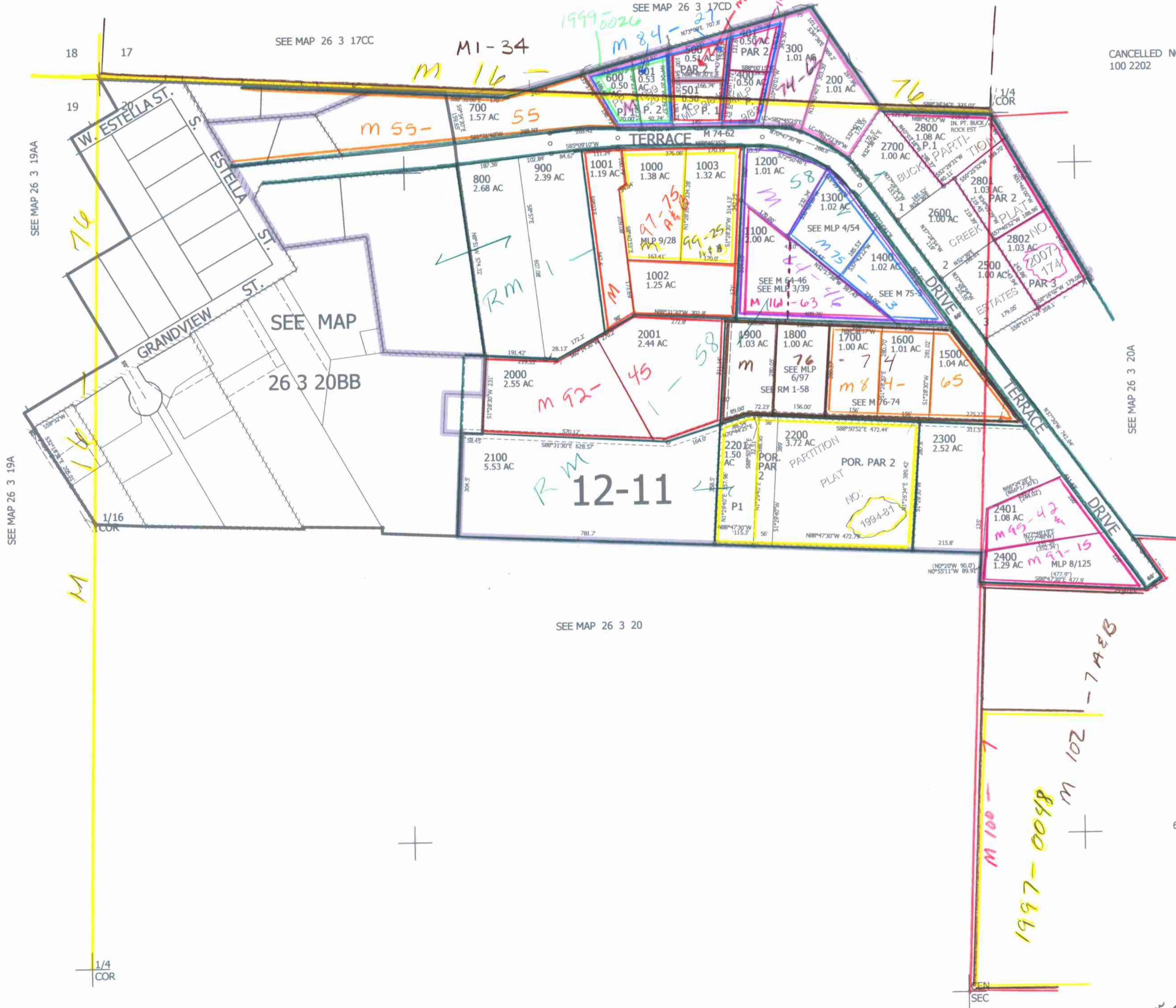
THIS MAP WAS PREPARED FOR ASSESSMENT PURPOSE ONLY.

NW1/4 SEC.20 T.26S. R.3W. W.M. DOUGLAS COUNTY  
1" = 200'

REVISED ON 1-31-08

26 3 20B & INDEX

CANCELLED NO'S 100 2202



SEE MAP 26 3 19AA

SEE MAP 26 3 19A

SEE MAP 26 3 17CC

SEE MAP

SEE MAP 26 3 20

SEE MAP 26 3 20A

4,233,000

604,000

26 3 20B & INDEX  
Cw 02/05/08  
JCV